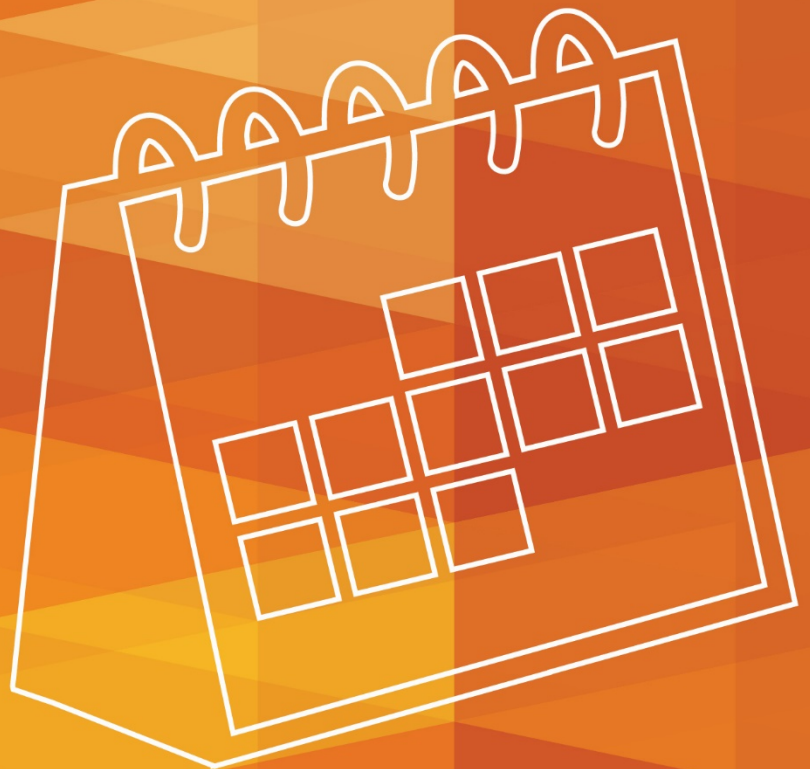




The Organisation of School Time in Europe

Primary and General
Secondary Education
2021/22

Eurydice – *Facts and Figures*



More information on the European Union is available on the Internet (<https://europa.eu/>).

Luxembourg: Publications Office of the European Union, 2021

PDF ISBN 978-92-9484-657-0 ISSN 2443-5309 doi:10.2797/63021 EC-AH-21-001-EN-N

© European Education and Culture Executive Agency, 2021

The Commission's reuse policy is implemented by Commission Decision 2011/833/EU of 12 December 2011 on the reuse of Commission documents (OJ L 330, 14.12.2011, p. 39 – <https://eur-lex.europa.eu/eli/dec/2011/833/oj>).

Unless otherwise noted, the reuse of this document is authorised under the Creative Commons Attribution 4.0 International (CC BY 4.0) licence (<https://creativecommons.org/licenses/by/4.0/>). This means that reuse is allowed, provided appropriate credit is given and any changes are indicated.

For any use or reproduction of elements that are not owned by the EU, permission may need to be sought directly from the respective rightholders. The EU does not own the copyright in relation to any images which do not carry the copyright indicator © European Union.



The Organisation of School Time in Europe

**Primary and
General Secondary Education**

2021/22

Eurydice – Facts and Figures

This document is published by the European Education and Culture Executive Agency (EACEA, Education and Youth Policy Analysis).

Please cite this publication as:

European Commission/EACEA/Eurydice, 2021. *The Organisation of School Time in Europe. Primary and General Secondary Education – 2021/22*. Eurydice Facts and Figures. Luxembourg: Publications Office of the European Union.

Text completed in August 2021.

Luxembourg: Publications Office of the European Union, 2021

© European Education and Culture Executive Agency, 2021

Reproduction is authorized provided the source is acknowledged.

European Education and Culture Executive Agency

Education and Youth Policy Analysis

Avenue du Bourget 1 (J-70 – Unit A6)

B-1049 Brussels

E-mail: eacea-eurydice@ec.europa.eu

Website: <https://eacea.ec.europa.eu/national-policies/eurydice/>

INTRODUCTION

This report, based on national data, gives an overview on the length of the school year, the start and the end dates, the timing and length of school holidays and the number of school days. It covers both primary and general secondary education and key points are illustrated by comparative figures. The information is available for the 37 countries participating in the EU's Erasmus+ programme (27 Member States, Albania, Bosnia and Herzegovina, Switzerland, Iceland, Liechtenstein, Montenegro, North Macedonia, Norway, Serbia and Turkey). The reference year is 2021/22.

KEY POINTS

In the majority of countries, the school year starts at the beginning of September

Despite some differences, countries across Europe show many similarities regarding the structure of the school year. In 10 countries/regions, it generally starts in August. The countries where the school year begins the earliest are Denmark and Finland. In Germany, although there is an official starting date on 1 August, in reality, schools in the different *Länder* begin between 2 August and 14 September. This year, in 13 European countries/regions, the school year starts on 1 September. In some countries/regions, the starting date is usually around mid-September: this is the case in Southern Europe (e.g. Greece, Spain, Italy, Cyprus, Portugal, Albania and Turkey) but also in Luxembourg and Romania. In Malta, children return to school at the end of September. In Germany, Spain, Italy, the Netherlands, Austria and Switzerland, the beginning and the end of the school year vary significantly according to the regions.

See Figure 1.

The most common range of number of school days is between 170 and 190 across Europe

The number of school days varies between 165 days in primary education in Albania and Malta and 200 days in Denmark and Italy. In around half the countries/regions, it is between 170 and 180 days (ISCED levels 1, 2 and 3); in 13 countries/regions, the number varies between 181 and 190 days. In general, the number of school days is the same in primary and secondary education, but there are a few exceptions: in France and Serbia (both in upper secondary education), in Lithuania and Romania for example, the number of schools days is higher in secondary education than in primary.

The opposite (fewer school days in secondary education than in primary education) is observed in Greece, Ireland and Bosnia and Herzegovina (Republica Sprska). In countries where the number of school days varies according to the grade within a level, it is often the last grade that has the least number of school days.

See Figure 2.

The distribution and length of holidays during the school year varies between countries with the exception of the Christmas break

In addition to the summer break, there are four other main periods of school holidays across Europe: the autumn holidays, Christmas and New Year's, winter/Carnival holidays as well the spring/Easter holidays. With the exception of the Christmas/New Year's holiday, other school breaks differ both in length and timing. As some of these holidays are related to flexible calendar dates (Carnival and

Easter), their timing changes slightly from year to year. As well as these common holidays, all countries offer additional days of holiday for public or religious occasions.

In the autumn, children have one week of holidays in 16 countries/regions; in the other countries, it varies between two days or three days (e.g. Czechia, Croatia, Malta, Slovakia, Iceland and Serbia) to three weeks (Switzerland) or no holidays at all in 11 countries (e.g. Greece, Poland, Albania, Bosnia and Herzegovina, and Montenegro).

At Christmas, nearly all countries offer two weeks of holidays; it is only week in Poland and Slovenia, and up to three weeks in the case of Sweden, Montenegro and Serbia, and even more in Bosnia and Herzegovina for example. For Carnival, in around 17 countries/regions, pupils have one week of holidays and even two weeks in France, Cyprus, Poland and Turkey. On the contrary, some countries/regions do not have holidays during that period (e.g. Greece and Albania).

The spring/Easter holidays last one or two weeks in most of the countries. However, some countries only offer a few days at that time (e.g. Lithuania, Finland and Albania) to three weeks in Switzerland. No holidays at that period in Bosnia and Herzegovina (Federation of Bosnia and Herzegovina) and Montenegro.

See Figure 1.

Regional and local variations in school holidays exist within some countries

The periods and dates of school holidays may vary within a country. In some countries, such as Germany, Spain, Italy, Austria and Switzerland, regional authorities make these decisions. In Sweden and Norway, the responsibility lies with the municipalities. However, in general, the number of days of teaching is fixed at central level.

In Czechia, Germany, France, the Netherlands, Poland, Slovenia, Slovakia and Switzerland, the central authorities fix different dates for some periods of holidays according to the geographical area.

Despite some differences in the length of holidays, the pattern of holidays over the school year is similar for both primary and secondary education.

The length of the summer holidays varies a lot across Europe

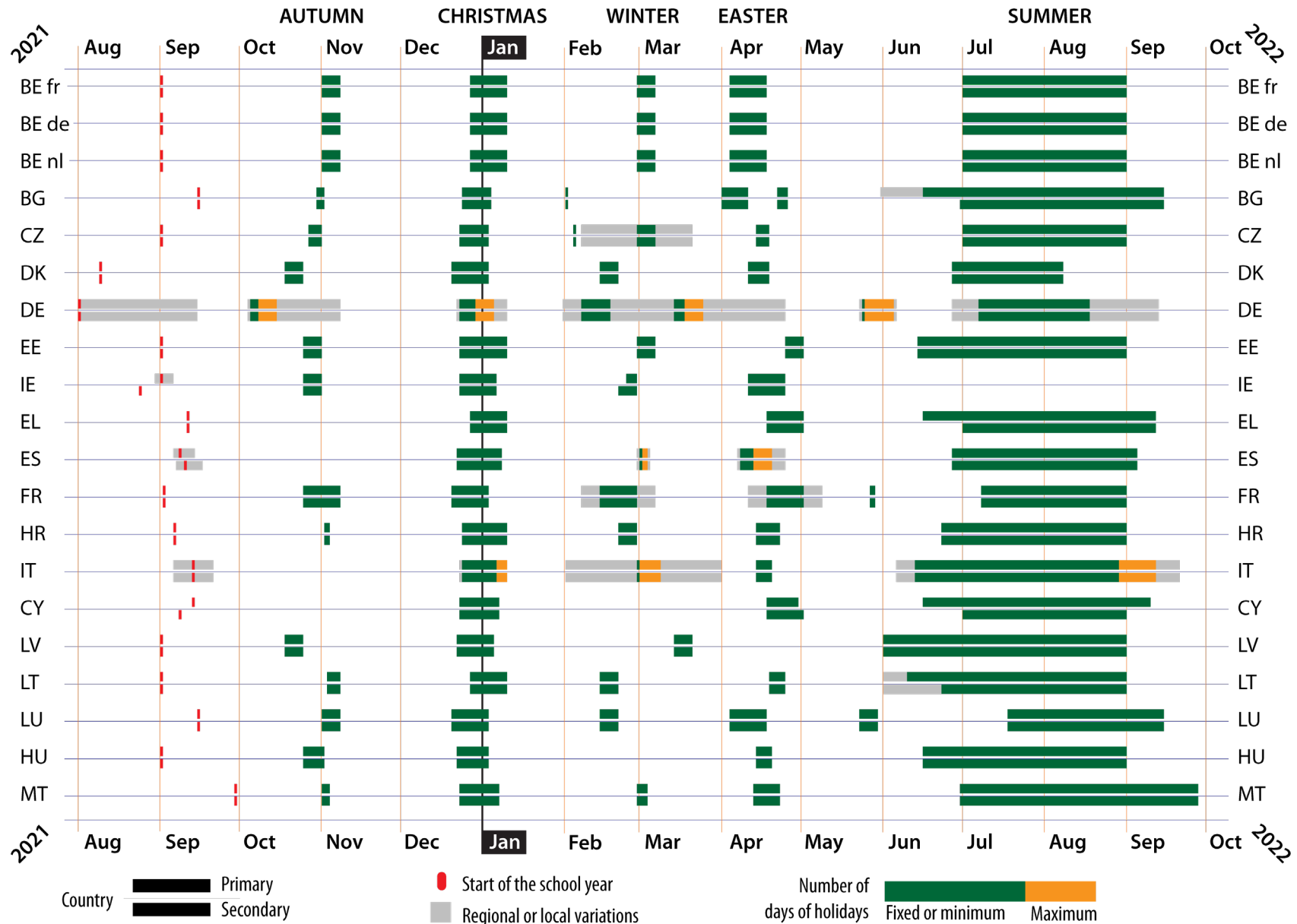
In Europe, the school year generally ends between the end of May and the second half of July. Mid-June is the time when the summer break begins in most countries. The length of the summer holidays varies significantly between countries: from 6 weeks in some German *Länder*, the Netherlands and Liechtenstein, up to 13 weeks in Latvia, between 11 and 14 weeks in Italy and Portugal, and even 15 weeks in Albania (primary education).

Some countries show differences in the length of summer holidays depending on the level of education. In secondary education in Bosnia and Herzegovina (Republika Srpska), students start the summer holidays earlier than in primary education.

At the opposite, in Greece, Cyprus, Albania and Montenegro, students in primary education begin their summer holidays before those in secondary education.

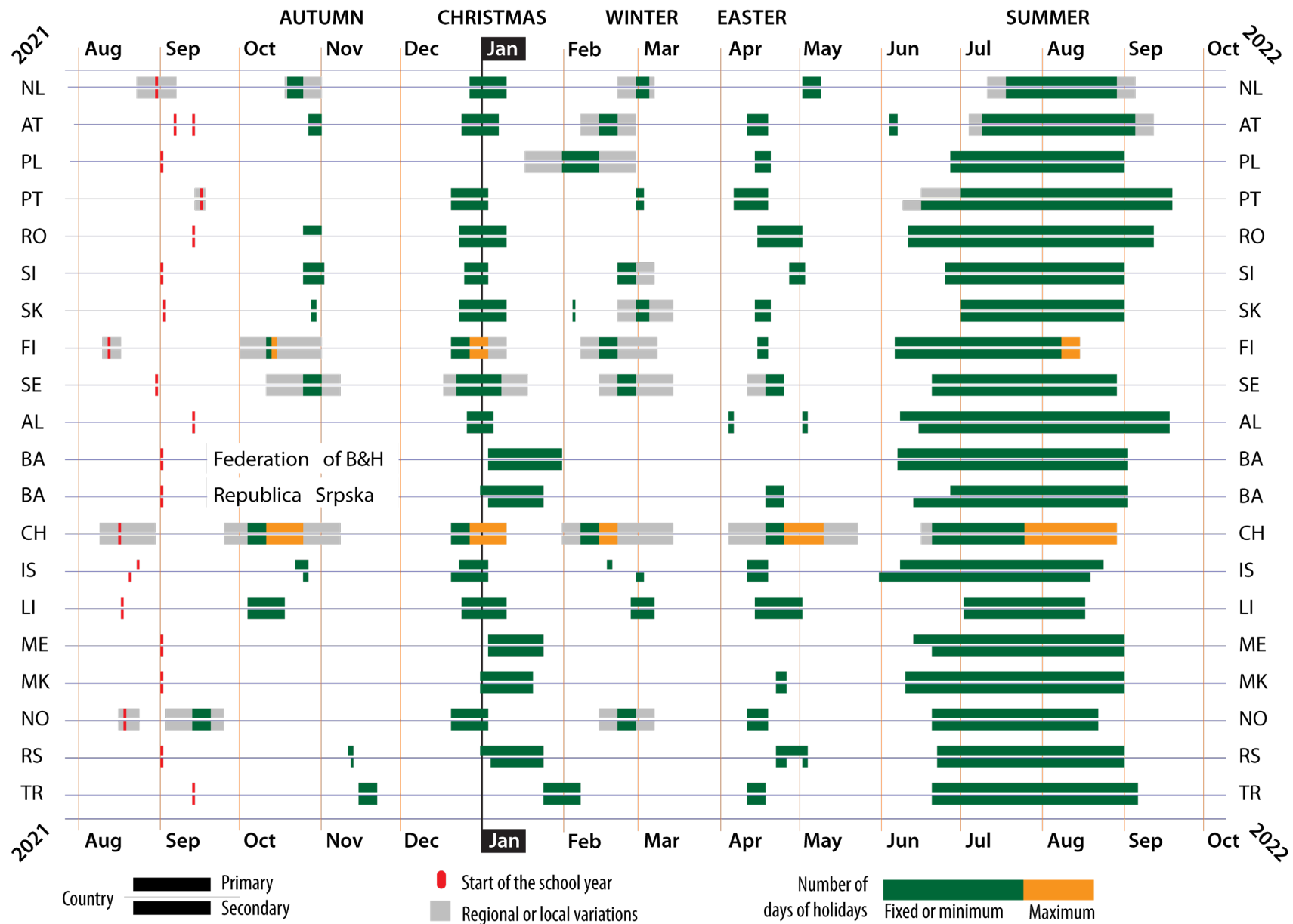
See Figure 3.

Figure 1: Length of the school year and distribution of holidays, general education, ISCED 1-3, 2021/22



NB: Denmark, Latvia, Hungary, Slovenia, Sweden and Serbia: The distinction is made between primary and lower secondary education (single structure) on one hand and upper secondary on the other hand.

Figure 1 (continued): Length of the school year and distribution of holidays, general education, ISCED 1-3, 2020/21



NB: Denmark, Latvia, Hungary, Slovenia, Sweden and Serbia: The distinction is made between primary and lower secondary education (single structure) on one hand and upper secondary on the other hand.

Portugal: The grey mark reflects the local/regional variations (in the starting of the school year) and also the grade variations (in the end of the school year).

Figure 2: Number of school days in primary and general secondary education, 2021/22



Source: Eurydice.

Country-specific notes

Bulgaria: Given the pandemic emergency situation, this year the number of days is not divided by classes.

Croatia: The time allocated to teaching in primary and secondary schools should not be less than 175 teaching days, or 35 teaching weeks and for the students in the final year of upper general secondary education the time allocated to teaching should not be less than 160 teaching days, or 32 teaching weeks

Latvia: 172 school days for classes 2-8 and 10-11; 167 school days for class 1; 1182 school days for class 9; 187 school days for class 12.

Lithuania: 185 days for secondary education, except for the last grade (IV gymnasium grade), where it is 180 because of the examinations.

Poland: 149 days for final grade of ISCED 3.

Portugal: The total number of instruction days varies between 162 and 180 days due to the fact that some grades have national exams and finish classes in different days and also because schools can decide to begin classes between 14 and 17 September.

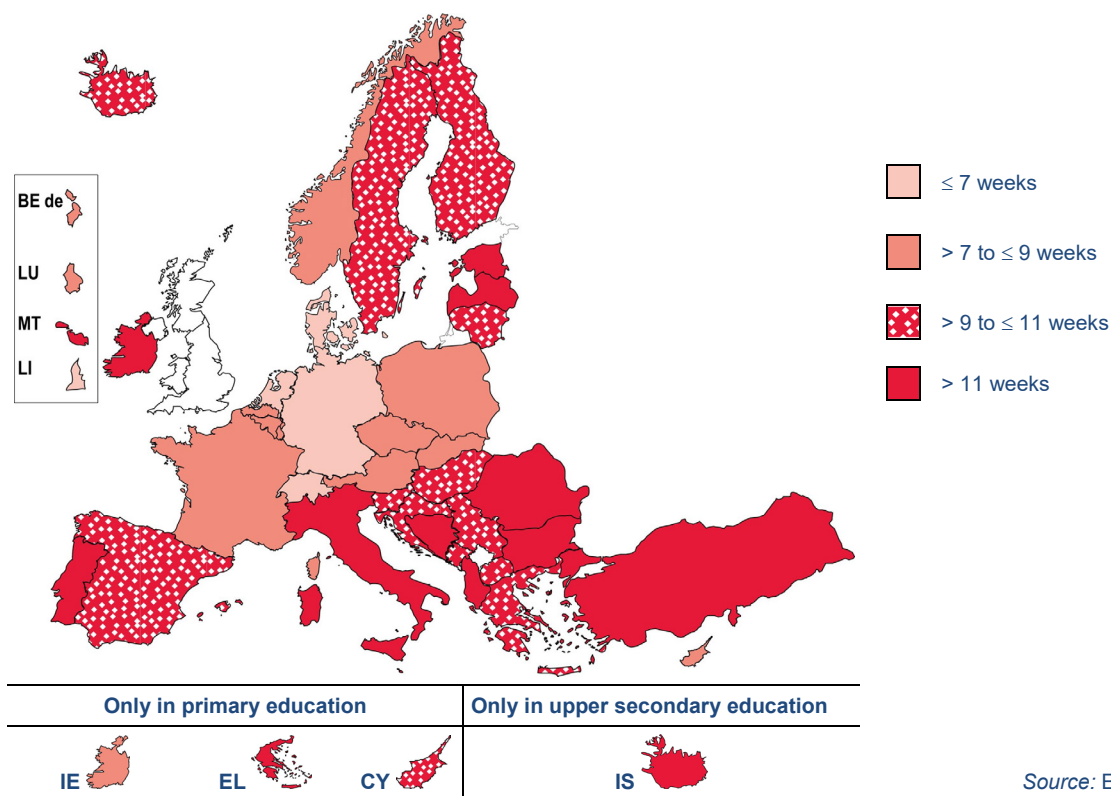
Slovenia: Single structure education: 183 days in the final grade; upper secondary education: 164 days in the final grade.

Bosnia and Herzegovina: **Federation of B&H:** Primary education: 170 days for the final grades; secondary education: 153 days for the final grade. **Republica Srpska:** Primary education: 169 days for the final grade; secondary education: 162 days for the final grades.

Montenegro: 169 days for the final year.

Serbia: Primary education: 170 days in the final grade; the final grade's calendar consists of 170 school working days in vocational upper secondary education and 165 days in general upper secondary education

Figure 3: Length of summer holidays (in weeks), primary and secondary general education, 2021/22



Source: Eurydice.

Country-specific notes

Bulgaria: Between 11 and 15 weeks in primary education.

Portugal: In the 1st cycle (grades 1 to 4), summer holidays take 10 to 11 weeks. In upper secondary education, summer holidays are reduced for students who participate in the national exams.

Switzerland: Between 5 and 10 weeks in primary and secondary education. In most cantons, it's less than 7 weeks, but in Ticino it's 10 weeks.

Countries

Albania.....	10
Austria	11
Belgium – Flemish Community.....	12
Belgium – French Community.....	13
Belgium – German-speaking Community	14
Bosnia and Herzegovina – Federation of Bosnia and Herzegovina	15
Bosnia and Herzegovina – Republika Srpska.....	16
Bulgaria	17
Croatia	18
Cyprus	19
Czechia.....	20
Denmark	21
Estonia.....	22
Finland.....	23
France	24
Germany.....	26
Greece.....	28
Hungary.....	29
Iceland.....	30
Ireland.....	32
Italy.....	33
Latvia	35
Malta.....	36
Liechtenstein	37
Lithuania	38
Luxembourg.....	39
Montenegro	40
The Netherlands	41
North Macedonia	43
Norway	45
Poland	46
Portugal	47
Romania	48
Serbia.....	49
Slovakia.....	51
Slovenia.....	52
Spain	53
Sweden.....	55
Switzerland.....	56
Turkey.....	59

Albania

Organisation of school time in primary and general secondary education – 2021/22

	Primary and lower secondary education	General upper secondary education
Starting date of students' school year	13 September 2021	13 September 2021
End of students' school year	8 June 2022 (Basic education)	15 June 2022
Christmas/New Year	24 December 2021 – 4 January 2022	24 December 2021 – 4 January 2022
Spring/Easter	3-5 April 2022 (Catholic Easter) 30 April – 3 May 2021 (Orthodox Easter)	3-5 April 2022 (Catholic Easter) 30 April – 3 May 2021 (Orthodox Easter)
Third term	28 April – 13 June 2022	28 April – 20 June 2022
Summer	8 June – 17 September 2022	15 June – 17 September 2022
Public holidays (national/religious/occasional)	8 October 2021 (National Youth Day) 19 October 2021 (Mother Theresa sanctification day) 28 November 2021 (Flag and Independence Day) 29 November 2020 (Liberation Day) 24 December 2021 – 4 January 2022 (Christmas Holiday) 13 March 2022 (Summer day) 21 March 2022 (Novruz Day) 21 April 2022 (Catholic Eastern) 28 April 2022 (Orthodox Eastern) 1 May 2022 (Labor Day) 5 June 2022 (Fiter Bajram) 21 August 2022 (Kurban Bajram)	8 October 2021 (National Youth Day) 19 October 2021 (Mother Theresa sanctification day) 28 November 2021 (Flag and Independence Day) 29 November 2020 (Liberation Day) 24 December 2021 – 4 January 2022 (Christmas Holiday) 13 March 2022 (Summer day) 21 March 2022 (Novruz Day) 21 April 2022 (Catholic Eastern) 28 April 2022 (Orthodox Eastern) 1 May 2022 (Labor Day) 5 June 2022 (Fiter Bajram) 21 August 2022 (Kurban Bajram)
Starting date of teachers' school year	14 September 2021	14 September 2021
End of teachers' school year	8 June 2022	15 June 2022

Source: Eurydice.

Total days primary and lower secondary: 165

Total days upper secondary: 157

Total number of holidays: 22

Austria

Organisation of school time in primary and general secondary education – 2021/22

	Primary education	General secondary education
Starting date of students' school year	6 September 2021: Burgenland, Niederösterreich, Wien 13 September 2021: Kärnten, Oberösterreich, Salzburg, Steiermark, Tirol, Vorarlberg	6 September 2021: Burgenland, Niederösterreich, Wien 13 September 2021: Kärnten, Oberösterreich, Salzburg, Steiermark, Tirol, Vorarlberg
End of students' school year	1 July 2022: Burgenland, Niederösterreich, Wien 8 July 2022: Kärnten, Oberösterreich, Salzburg, Steiermark, Tirol, Vorarlberg	1 July 2022: Burgenland, Niederösterreich, Wien 8 July 2022: Kärnten, Oberösterreich, Salzburg, Steiermark, Tirol, Vorarlberg
Autumn	27-31 October 2021	27-31 October 2021
Christmas/New Year	2 weeks 24 December 2021 – 6 January 2022	2 weeks 24 December 2021 – 6 January 2022
Winter/Carnival	1 week 7-12 February 2022: Niederösterreich, Wien 14-19 February 2022: Burgenland, Kärnten, Salzburg, Tirol, Vorarlberg 21-26 February 2022: Oberösterreich, Steiermark	1 week 7-12 February 2022: Niederösterreich, Wien 14-19 February 2022: Burgenland, Kärnten, Salzburg, Tirol, Vorarlberg 21-26 February 2022: Oberösterreich, Steiermark
Spring/Easter	1 week 9-18 April 2022	1 week 9-18 April 2022
Third term	3 or 4 days 4-6 June 2022	3 or 4 days 4-6 June 2022
Summer	About 9 weeks 2 July – 4 September 2022: Burgenland, Niederösterreich, Wien 9 July – 11 September 2022: Kärnten, Oberösterreich, Salzburg, Steiermark, Tirol, Vorarlberg	About 9 weeks 2 July – 4 September 2022: Burgenland, Niederösterreich, Wien 9 July – 11 September 2022: Kärnten, Oberösterreich, Salzburg, Steiermark, Tirol, Vorarlberg
Public/religious holidays	1 November 2021 2 November 2021 8 December 2021 1 May 2022 26 May 2022 16 June 2022 1 extra religious holiday per province (Land)	1 November 2021 2 November 2021 8 December 2021 1 May 2022 26 May 2022 16 June 2022 1 extra religious holiday per province (Land)
Starting/end date of teachers' school year	The teachers' school year is the same as the pupils' school year.	The teachers' school year is the same as the pupils' school year.

Belgium – Flemish Community

Organisation of school time in primary and general secondary education – 2020/21

	Primary education	General secondary education
Starting date of students' school year	1 September 2021	1 September 2021
End of students' school year	30 June 2022	30 June 2022
Autumn holidays	1 week 1-7 November 2021	1 week 1-7 November 2021
Christmas/New Year holidays	2 weeks 27 December 2021 – 9 January 2022	2 weeks 27 December 2021 – 9 January 2022
Winter/Carnival	1 week 28 February – 6 March 2022	1 week 28 February – 6 March 2022
Spring/Easter	2 weeks 4-17 April 2022	2 weeks 4-17 April 2022
Third term	Between Easter holidays and summer holidays	Between Easter holidays and summer holidays
Summer	9 weeks 1 July – 31 August 2022	9 weeks 1 July – 31 August 2022
Public holidays (national/religious/occasional)	1 November 2021, 2 November 2021 (All Saints' Day, All Souls' Day) ⁽¹⁾ 11 November 2021 (Armistice Day) 25 December 2021 (Christmas) 1 January 2022 (New year's day) 18 April 2022 (Easter Monday) 1 May 2021 (Labour Day) ⁽²⁾ 26-27 May 2021 (Ascension Day) 6 June 2021 (Whit Monday)	1 November 2021, 2 November 2021 (All Saints' Day, All Souls' Day) 11 November 2021 (Armistice Day) 25 December 2021 (Christmas) 1 January 2022 (New year's day) 18 April 2022 (Easter Monday) 1 May 2021 (Labour Day) 26-27 May 2021 (Ascension Day) 6 June 2021 (Whit Monday)
Starting date of teachers' school year	1 September 2021	1 September 2021
End of teachers' school year	30 June 2022	30 June 2022

⁽¹⁾ Please note that 1 and 2 November fall during this week of Holidays, and thus don't make for extra days off.

⁽²⁾ Please note that Christmas, New Year and Labour day fall on either a Sunday or a Saturday in 2021, and thus doesn't make for an extra day off.

Belgium – French Community

Organisation of school time in primary and general secondary education – 2021/22

	Primary education	General secondary education
Starting date of students' school year	1 September 2021	1 September 2021
End of students' school year	30 June 2022	30 June 2022
Autumn holidays	1 week 1-5 November 2021	1 week 1-5 November 2021
Winter/Christmas/New Year	2 weeks 27 December 2021 – 7 January 2022	2 weeks 27 December 2021 – 7 January 2022
Carnival	1 week 28 February – 4 March 2022	1 week 28 February – 4 March 2022
Spring/Easter	2 weeks 4-15 April 2022	2 weeks 4-15 April 2022
Summer	9 weeks (8 weeks?*) 1 July – 31 August 2022 (28 August 2022?*)	9 weeks (8 weeks?*) 1 July – 31 August 2022 (28 August 2022?*)
Public/religious holidays	27 September 2021 11 November 2021 18 April 2022 26 May 2022 6 June 2022	27 September 2021 11 November 2021 18 April 2022 26 May 2022 6 June 2022
Starting date of teachers' school year	1 September 2021	1 September 2021
End of teachers' school year	30 June 2022	30 June 2022

Source: Eurydice.

Additional note:

- * On 12 May 2021, the Government of the French Community approved the note of orientation relating to the revision of annual school rhythms, which confirms the decision to revise, as from the start of the 2022/23 school year, the school rhythms for all types and levels of compulsory education (primary and secondary).
The 2022/23 school year would therefore begin on the last Monday of August (the 29th).

Currently, the Decree of the Government of the French Community concerning the school year 2021/22, provides for the summer holidays to start on 1 July 2022 without specifying an end date.

The adoption of the text instituting this reform of school rhythms will make it possible to confirm definitively the end date of this summer holiday period and consequently its precise duration.

Belgium – German-speaking Community

Organisation of school time in primary and general secondary education – 2021/22

	Primary education (ISCED 1)	Secondary education (ISCED 2 + 3)
Starting date of students' school year	1 September 2021	1 September 2021
End of students' school year	30 June 2022	30 June 2022
Autumn holidays	1 week 1-5 November 2021	1 week 1-5 November 2021
Christmas/New Year	2 weeks 27 December 2021– 7 January 2022	2 weeks 27 December 2021– 7 January 2022
Winter/Carnival	1 week 28 February – 4 March 2022	1 week 28 February – 4 March 2022
Spring/Easter	2 weeks 4-15 April 2022	2 weeks 4-15 April 2022
Third term	–	–
Summer	9 weeks 1 July – 31 August 2022	9 weeks 1 July – 31 August 2022
Public/religious holidays	1 November 2021 11 November 2021 15 November 2021 24-26 December 2021 1 January 2022 18 April 2022 1 May 2022 26 May 2022 6 June 2022	1 November 2021 11 November 2021 15 November 2021 24-26 December 2021 1 January 2022 18 April 2022 1 May 2022 26 May 2022 6 June 2022
Starting date of teachers' school year	1 September 2021	1 September 2021
End of teachers' school year	30 June 2022	30 June 2022

Additional notes

During the last working days of August, secondary education teachers may be consigned to conduct exams of a second chance.

A school year has a minimum of 180 and a maximum of 184 days of school days. The school year 2021/22 will have a total of 181 school days.

Bosnia and Herzegovina – Federation of Bosnia and Herzegovina

Organisation of school time in primary and general secondary education – 2021/22

	Primary education	General secondary education
Starting date of students' school year	1 September 2021	1 September 2021
End of students' school year	6 June 2022 (30 May 2022 in the final year)	6 June 2022 (29 April 2022 in the final year)
Winter holidays	1-30 January 2022	1-30 January 2022
Spring/Easter	–	–
Summer holidays	7 June – 1 September 2022	7 June – 1 September 2022
Public/religious holidays	Public holidays: 8 October 2021 (Teacher's Day) 25 November 2021 (Statehood Day) 1-2 January 2022 (New Year) 1 March 2022 (Independence Day) 1-2 May 2022 (International Labour Day) Religious holidays: 25 December 2021 (Catholic Christmas) 7 January 2022 (Orthodox Christmas) 17 April 2022 (Catholic Easter) 24 April 2022 (Orthodox Easter) 2 May 2022 (Eid Al-Fitr) 9 July 2022 (Eid Al-Adha)	
Starting date of teachers' school year	16 August 2021	16 August 2021
End of teachers' school year	30 June 2022	30 June 2022

The total number of school days in primary schools is 175 and for the final grade 170.

The total number of school days in secondary schools is 175 and for the final grade 153.

Additional notes

Religious holidays are celebrated depending on the religious community.

There are some differences between the cantons within the Federation of Bosnia and Herzegovina. Some cantons will start school year on 7 September 2021.

The given data are the most common for most cantons. Apart from these dates, each canton (ten in total) has established its own celebration day.

Bosnia and Herzegovina – Republika Srpska

Organisation of school time in primary and general secondary education – 2021/22

	Primary education	General secondary education
Starting date of students' school year	1 September 2021	1 September 2021
End of students' school year	24 June 2022 (10 June 2022 in the final year)	10 June 2022 (13 May 2022 in the final year)
Winter holidays	31 December 2021 – 21 January 2022	3 January 2022 – 21 January 2022
Spring/Easter	18-22 April 2022	18-22 April 2022
Summer holidays	24 June – 1 September 2022	10 June – 1 September 2022
Public/religious holidays	Public holidays: 21 November 2021 (Day of establishing of General Framework Agreement for Peace) 1-2 January 2022 (New Year) 9 January 2022 Day of Republic 1-2 May 2022 (International Labour Day) 9 May 2022 (Day of victory over fascism) Religious holidays: 6-7 January 2022 (Orthodox Christmas) 22 April 2022 (Good Friday) 24-25 April 2022 (Orthodox Easter)	
Starting date of teachers' school year	16 August 2021	16 August 2021
End of teachers' school year	30 June 2022	30 June 2022

The total number of school days in primary schools is 189 and for the final grade 169.

The total number of school days in secondary schools is 182 and for the final grade 162.

Additional notes

Religious holidays are celebrated depending the religion community. Holidays which are dated on non-working days are not taken into account.

Bulgaria

Organisation of school time in primary and general secondary education – 2021/22

	Primary education	General secondary education
Starting date of students' school year	15 September 2021	15 September 2021
End of students' school year	The end of the school year will be defined depending on class and type of education	The end of the school year will be defined depending on class and type of education
Autumn holidays	30 October – 1 November 2021	30 October – 1 November 2021
Christmas/New Year	24 December 2021 – 3 January 2022	24 December 2021 – 3 January 2022
Winter/Carnival	1 February 2022	1 February 2022
Spring	1-10 April 2022	1-10 April 2022
Easter	22-25 April 2022	22-25 April 2022
Summer	The start of the summer holidays will be defined depending on class and type of education – 14 September 2022	The start of the summer holidays will be defined depending on class and type of education – 14 September 2022
Public/religious holidays	22 September 2021 24 December 2021 3 March 2022 1 May 2022 6 May 2022 24-25 May 2022	22 September 2021 24 December 2021 3 March 2022 1 May 2022 6 May 2022 24-25 May 2022
Other dates	18 May 2022 State graduation exam in Bulgarian language and literature 20 May 2022 Second state graduation exam 26 May 2022 National external assessment after Year 4 (for all other classes the day is a school day) 27 May 2022 National external assessment after Year 4 (for all other classes the day is a school day) 14 June 2022 National external assessment after Year 7 and Year 10 in Bulgarian language and literature 16 June 2022 National external assessment after Year 7 and Year 10 in mathematics	
Starting date of teachers' school year	See Additional Notes	See Additional Notes
End of teachers' school year	See Additional Notes	See Additional Notes

Source: Eurydice

Additional notes

Teachers' school year: The length of the teachers' school year is defined at school level. The school head is responsible for setting and drawing up of the school's timetable. The most common situation is when teachers, on employment contract, are required to be present and at disposal at school at the beginning of September so that they can get prepared well in advance and deal with the school documentation for the new school year.

The end of the teachers' school year is also determined at school level. If teachers are needed to be at school in order to help, complete or close the school documentation, or if they are involved in other out-of-class activities, school projects, initiatives, etc., they usually are supposed to stay extra days after the beginning of the summer holidays for pupils.

Croatia

Organisation of school time in primary and general secondary education – 2021/22

	Primary and general secondary education
Starting date of students' school year	6 September 2021
End of students' school year	21 June 2022 (25 May 2022 in the final year of upper general secondary education)
Autumn holidays	2-3 November 2021
Winter holidays	First part: 24 December 2021 – 7 January 2022 Second part: 21-25 February 2022
Spring holidays	14-22 April 2022
Summer holidays	23 June – 31 August 2022 (end of the school year, see Additional notes)
Public/religious holidays	1 November 2021 (All Saints Day) 18 November 2021 (Remembrance Day for the Victims of the Homeland War and Remembrance Day for the Victims of Vukovar and Skabrnja) 25 December 2021 (Christmas Day) 26 December 2021 (Saint Stephen's Day) 1 January 2022 (New Year's Day) 6 January 2022 (Epiphany) 17 April 2022 (Easter) 18 April 2022 (Easter Monday) 1 May 2022 (International Labour Day) 30 May 2022 (Statehood Day) 16 June 2022 (Corpus Christi)
Starting date of teachers' school year	Not specified, see Additional notes.
End of teachers' school year	Not specified, see Additional notes.

Source: Eurydice.

Additional notes

In the Decision on the Beginning and the End of the School Year, Number of Working Days and Duration of Holidays for Primary and Secondary School Pupils for the School Year 2021/22 (*Odluka o početku i završetku nastavne godine, broju radnih dana i trajanju odmora učenika osnovnih i srednjih škola za školsku godinu 2021./2022.*, Official Gazette 45/2021) is determined the distribution of holidays in the school year.

Article 48 of the Act on Education in Primary and Secondary Schools (*Zakon o odgoju i obrazovanju u osnovnoj i srednjoj školi*, Official Gazette 87/2008, 86/2009, 105/2010, 90/2011, 5/2012, 16/2012, 86/2012, 126/2012, 94/2013, 152/2014, 07/2017, 68/2018, 98/2019, 64/2020, 133/2020) stipulates that the school year starts 1 September and ends 31 August. The teaching activity is organized within two semesters. The time allocated to teaching in primary and secondary schools should not be less than 175 teaching days, or 35 teaching weeks and for the students in the final year of upper general secondary education the time allocated to teaching should not be less than 160 teaching days, or 32 teaching weeks. During the school year students have the right to winter, spring and summer holidays.

Starting from the school year 2010/11, counties, regional administrative units (in total 21) are allowed to request some modifications of the school calendar for the coming year (the date of the beginning of the school year and the duration of the winter break) which apply at the County level.

Summer holidays: End of the school year is written according to the cited Article 48 of the Act on Education in Primary and Secondary Schools. Exact end date of the summer holidays is not stated in the decision for the school year 2021/22). Teaching activity in school year after the summer holidays generally starts on the first Monday in September, in 2022 that would be 5 September.

Teachers' school year: The length of the teachers' school year is not defined by the top-level decisions or laws. Generally, teachers have to be present at the end of August for preparation of the beginning of the school year to mid-July for other activities at the end of the school year. According to the collective labour agreements for primary and secondary school teachers (*Kolektivni ugovor za zaposlenike u osnovnoškolskim ustanovama*, Official Gazette, 51/2018, 122/2019; *Kolektivni ugovor za zaposlenike u srednjoškolskim ustanovama*, Official Gazette, 51/2018, 122/2019), teachers' annual leave coincides with students' holidays and the total duration of the annual leave should not exceed 30 working days.

*All public and religious holidays during the teaching year are listed in the table.

Cyprus

Organisation of school time in primary and general secondary education – 2021/22

	Primary education	General secondary education
Starting date of students' school year*	13 September 2021	8 September 2021 (see Additional notes)
End of students' school year*	15 June 2022	Lower secondary: 31 May 2022 Upper secondary: 27 May 2022 (see Additional notes)
Christmas/New Year	2 weeks 23 December 2021 – 6 January 2022	2 weeks 24 December 2021 – 6 January 2022
Spring/Easter	2 weeks 18-29 April 2022	2 weeks 18 April – 1 May 2022
Summer	12 weeks 16 June – 9 September 2022	9 weeks (62 days) 1 July – 31 August 2022
Public/religious holidays	1 October 2021 28 October 2021 7 March 2022 25 March 2022 1 April 2022 2 June 2022 13 June 2022	1 October 2021 28 October 2021 7 March 2022 25 March 2022 1 April 2022 13 June 2022
Starting date of teachers' school year**	6 September 2021	1 September 2021
End of teachers' school year**	17 June 2022	30 June 2022

Source: Eurydice.

Additional notes

Primary education

***Students:** In primary education, lessons begin on the second Monday of September and end on the Wednesday before the penultimate Friday of June. For the school year 2021/22, lessons will begin on 13 September 2021. The total number of school days for the school year 2021/22 is 170 and for the holidays 90 (including summer vacation).

****Teachers:** Teachers in primary education need to be at school from the first Monday of September until the penultimate Friday of June. For the school year 2021/22, the teachers' starting date will be the 6th of September 2021. The official teachers' school year is longer than student's school year in primary education as it includes preparation of the school timetable, sorting out of classes and lessons, and a two-day teachers' professional learning programme. The total number of school days for the school year 2021/22 is 177 and for the holidays 83. In primary education, according to the Regulations for the Functioning of Primary Education Schools, the official school year is from 1 September each year until 31 August next year (1 September 2021 – 31 August 2022).

Secondary education

***Students:** Lessons, at secondary general education (lower and upper), begin after the 5th working day of September. The dates for the end of students' school year designate the end of lessons. After that, a two to three weeks end-of-year examinations' period is following. Moreover, from 15 January to 28 January, upper secondary students take semester examinations. The dates given for the end of lessons are subject to change as the Minister of Education has the right to vary them under certain circumstances. The total number of schooldays (students at the school) is 180 for lower secondary, 168 for upper secondary students. The semester and end of year examination days are not included in the schooling days. The total number of holidays during the school year 2021/22 (not included in the schooling days) is 25.

****Teachers:** The official teachers' school year is longer than the students' school year in secondary education. In secondary general education, according to the law (Regulations for the Functioning of Secondary Education Schools), the official school year is from 1 September each year until 31 August next year (1 September 2021 – 31 August 2022). Teachers are on duty from the first working day of September till the last working day of June, excluding school and public holidays.

Czechia

Organisation of school time in primary and general secondary education – 2021/22

	Primary education	General secondary education
Starting date of students' school year	1 September 2021	1 September 2021
End of students' school year	30 June 2022	30 June 2022
Autumn holidays	27-29 October 2021	27-29 October 2021
Christmas/New Year	23 December 2021 – 2 January 2022	23 December 2021 – 2 January 2022
Winter/Carnival	4 February 2022	4 February 2022
Spring/Easter	1 week between 7 February and 20 March 2022 depending on the region (Spring holidays) 14-18 April 2022 (Easter)	1 week between 7 February and 20 March 2022 depending on the region (Spring holidays) 14-18 April 2022 (Easter)
Summer holidays	1 July – 31 August 2022	1 July – 31 August 2022
Public/religious holidays	28 September 2021 28 October 2021 17 November 2021 24-26 December 2021 1 January 2022 15 and 18 April 2022 1 May 2022 (Sunday) 8 May 2022 (Sunday) 5 July 2022 6 July 2022	28 September 2021 28 October 2021 17 November 2021 24-26 December 2021 1 January 2022 15 and 18 April 2022 1 May 2022 (Sunday) 8 May 2022 (Sunday) 5 July 2022 6 July 2022
Starting date of teachers' school year	Not specified	Not specified
End of teachers' school year	Not specified	Not specified

Specification of terms for spring holidays	
Term 2022	Regions
7-13 February	Kroměříž, Uherské Hradiště, Vsetín, Zlín, Praha-východ, Praha-západ, Mělník, Rakovník, Plzeň-město, Plzeň-sever, Plzeň-jih, Hradec Králové, Teplice, Nový Jičín
14-20 February	Česká Lípa, Jablonec nad Nisou, Liberec, Semily, Havlíčkův Brod, Jihlava, Pelhřimov, Třebíč, Žďár nad Sázavou, Kladno, Kolín, Kutná Hora, Písek, Náchod, Bruntál
21-27 February	Mladá Boleslav, Příbram, Tábor, Prachatice, Strakonice, Ústí nad Labem, Chomutov, Most, Jičín, Rychnov nad Kněžnou, Olomouc, Šumperk, Opava, Jeseník
28 February – 6 March	Benešov, Beroun, Rokycany, České Budějovice, Český Krumlov, Klatovy, Trutnov, Pardubice, Chrudim, Svitavy, Ústí nad Orlicí, Ostrava-město, Prostějov
7-13 March	Praha 1 až 5, Blansko, Brno-město, Brno-venkov, Břeclav, Hodonín, Vyškov, Znojmo, Domažlice, Tachov, Louny, Karviná Praha 6 až 10, Cheb, Karlovy Vary, Sokolov, Nymburk, Jindřichův Hradec, Litoměřice, Děčín, Přešov, Frýdek-Místek
14-20 March	Praha 6 až 10, Cheb, Karlovy Vary, Sokolov, Nymburk, Jindřichův Hradec, Litoměřice, Děčín, Přešov, Frýdek-Místek

Source: Eurydice.

Additional notes

According to the Labour Code, the statutory leave for teachers at primary and secondary level is 8 weeks each calendar year. They take it primarily in the time of school holidays.

Education Act (No. 561/2004 Coll., Article 24) states that school heads may permit for pupils a maximum of five (5) days off within the school year for serious reasons, in particular for organisational and technical reasons.

The total number of school days is 196 and the total number of holidays is 89.

Denmark

Organisation of school time in primary and general secondary education – 2021/22

	Primary and lower secondary education (<i>Folkeskole</i>)	General secondary education (<i>Gymnasium</i>)
Starting date of students' school year	9 August 2021	9 August 2021
End of students' school year	25 June 2022	25 June 2022
Autumn holidays	16-24 October 2021	16-24 October 2021
Christmas/New Year	18 December 2021 – 2 January 2022	18 December 2021 – 2 January 2022
Winter/Carnival	12-20 February 2022	12-20 February 2022
Spring/Easter	9-18 April 2022	9-18 April 2022
Summer	Starting on 25 June 2022	Starting on 25 June 2022
Public/religious holidays	13 May 2022 26-27 May 2022 (only 26 May is a public holiday) 4-6 June 2022	13 May 2022 26 May 2022 4-6 June 2022
Starting date of teachers' school year	Not determined at central level – differs at the various schools/ institutions. In general, teachers start a few days before pupils/students.	
End of teachers' school year	Not determined at central level. Usually the teachers' school year follows that of the pupils/students.	

Source: Eurydice.

Additional notes

The above-mentioned dates for the *Folkeskole* are valid for the schools in Aarhus Municipality: <https://aarhus.dk/borger/pasning-skole-og-uddannelse/skole-sfo-og-klub/naar-dit-barn-gaar-i-skole/ferier-og-fridage/>. The number of holidays and public holidays in Aarhus Municipality in the school year 2021/22 (1 August 2021 to 31 July 2022) is 165 days, including weekends and public holidays. This means that the number of school days is 200.

The dates for upper secondary education are taken from Horsens Gymnasium & HF: <https://horsens-gym.dk/nuvaerende-elever/dagligdag-pa-skolen/>. The number of school days in upper secondary education is also 200 per year and 165 days of holidays, public holidays and weekends.

The winter/carnival holiday can vary across the country as it depends on the municipality, which usually decides whether the winter holiday is in week 7 or 8.

Folkeskoler, i.e. schools offering comprehensive primary and lower secondary education, are free to decide on the number of holidays and their distribution, given that they offer a minimum of 200 school days each year. The Ministry of Children and Education determines the last day of the school year, which is the case for both primary, lower secondary and general upper secondary education. In addition, the Ministry may also issue guidelines regarding the distribution of holidays.

Estonia

Organisation of school time in primary and general secondary education – 2021/22

	Primary education	General secondary education
Starting date of students' school year	1 September 2021	1 September 2021
End of students' school year	31 August 2022	31 August 2022
Autumn holidays	1 week 25-31 October 2021	1 week 25-31 October 2021
Christmas/New Year	2.5 weeks 23 December 2021 – 9 January 2022	2.5 weeks 23 December 2021 – 9 January 2022
Winter	1 week 28 February – 6 March 2022	1 week 28 February – 6 March 2022
Spring	1 week 25 April – 1 May 2022	1 week 25 April – 1 May 2022
Summer	12 weeks 14 June – 31 August 2022	12 weeks 14 June – 31 August 2022
Public/religious holidays	24-26 December 2021 (Christmas) 1 January 2022 (New Year's Day) 24 February 2022 (Independence Day) 15 April 2022 (Good Friday) 17 April 2022 (Easter Sunday) 1 May 2022 (May Day) 5 June 2022 (Pentecost) 23 June 2022 (Victory Day) 24 June 2022 (Midsummer Day) 20 August 2022 (Day of Restoration of Independence)	24-26 December 2021 (Christmas) 1 January 2022 (New Year's Day) 24 February 2022 (Independence Day) 15 April 2022 (Good Friday) 17 April 2022 (Easter Sunday) 1 May 2022 (May Day) 5 June 2022 (Pentecost) 23 June 2022 (Victory Day) 24 June 2022 (Midsummer Day) 20 August 2022 (Day of Restoration of Independence)
Starting date of teachers' school year	The beginning and the end of a teacher's school year depend on the individual school and teacher. According to the legislation, teachers have 56 days (8 weeks) of holidays. Generally, they take holidays in the middle of June and are back in the middle of August.	
End of teachers' school year		

Source: Eurydice.

Additional notes

The Basic Schools and Upper Secondary Schools Act (§24) stipulates that an academic year shall start on 1 September and a study period shall include not less than 175 days of study (35 weeks).

School holidays (and accordingly the end of the school year) are determined by a regulation of the Minister of Education and Research for every school year. Based on a proposal of the head of the school and with the approval of the board of trustees, the owner of a school may establish school holidays different from those established by the Minister, taking into account that during the academic year there are at least four school holidays with a total duration of at least 12 weeks, whereby the summer holiday lasts at least eight consecutive weeks.

Finland

Organisation of school time in primary and general secondary education – 2021/22

	Primary education	General secondary education
Starting date of students' school year	Between 10 and 16 August 2021	Between 10 and 16 August 2021
End of students' school year	4 June May 2022	4 June May 2022
Autumn holidays	2-5 days in October 2021	2-5 days in October 2021
Christmas/New Year	1-2 weeks between 18-22 December 2021 and 7 January 2022	1-2 weeks between 18-22 December 2021 and 7 January 2022
Winter/Carnival	1 week between 7 February and 7 March 2022	1 week between 7 February and 7 March 2022
Spring/Easter	4 days between 15 and 18 April 2022	4 days between 15 and 18 April 2022
Summer	10-11 weeks between 4 June to mid-August 2022	10-11 weeks between 4 June to mid-August 2022
Public/religious holidays	5 November 2021 (All Saints Day) 6 December 2021 (Independence Day) 24 December 2021 (Christmas Eve) (partly) 25 December 2021 (Christmas Day) 26 December 2021 (Boxing Day) 1 January 2022 (New Year's Day) 6 January 2022 (Epiphany) 15 April 2022 (Good Friday) 17 April 2022 (Easter Day) 18 April 2022 (Easter Monday) 1 May 2022 (May Day) 26 May 2022 (Ascension Day) 24 June 2022 (Midsummer Eve) (partly)	5 November 2021 (All Saints Day) 6 December 2021 (Independence Day) 24 December 2021 (Christmas Eve) (partly) 25 December 2021 (Christmas Day) 26 December 2021 (Boxing Day) 1 January 2022 (New Year's Day) 6 January 2022 (Epiphany) 15 April 2022 (Good Friday) 17 April 2022 (Easter Day) 18 April 2022 (Easter Monday) 1 May 2022 (May Day) 26 May 2022 (Ascension Day) 24 June 2022 (Midsummer Eve) (partly)
Starting date of teachers' school year (1)	Between 8 and 14 August 2021	Between 8 and 14 August 2021
End of teachers' school year	4 June May 2022	4 June May 2022

Source: Eurydice.

Additional notes

Independence day, Epiphany and 1 May are deducted from the total number of school days (190 days) if they are on any weekday other than Saturday. In the school year 2021/22, the number of school days will consequently be 188.

(1) There are no exact starting and ending dates of teachers' school year because their duties are regulated according to the collective agreement for teachers. In the agreement, the parties have agreed that the teachers have a calculatory holiday, which begins in mid-June and the length of holiday depends mainly on years in occupation. In practice, teachers' holidays coincide with students' holidays. However, teachers have their planning and INSET obligations, which they have to do both during and outside the school year. In general, teachers start a school year a couple days before students.

France

Organisation of school time in primary and general secondary education – 2021/22

	Primary and general secondary education
Starting date of students' school year	2 September 2021
End of students' school year	7 July 2022
Autumn holidays	2 weeks 25 October – 7 November 2021
Christmas/New Year	2 weeks 20 December 2021 – 2 January 2022
Winter/Carnival	2 weeks 14-27 February 2022 (zone A) 7-20 February 2022 (zone B) 21 February – 6 March 2022 (zone C)
Spring/Easter	2 weeks 18 April – 1 May 2022 (zone A) 11-24 April 2022 (zone B) 25 April – 8 May 2022 (zone C)
Additional holiday for 2021/22 (Long Ascension weekend)	27 and 28 May 2022
Summer	8 weeks 8 July 2022 – 31 August 2022
Public holidays (national/religious holidays)	The following dates are regarded as public holidays by all institutions ⁽³⁾ : 1 November 2021 (All Saints' Day) * 11 November 2021 (1918 Armistice Day) 25 December 2021 (Christmas) * 1 January 2022 (New Year) * 18 April 2022 (Easter Monday) ** 1 May 2022 (Labour Day) * 8 May 2022 (end of WWII in Europe) * 26 May 2022 (Ascension Day) 6 June 2022 (Whit Monday) 14 July 2022 (National holiday) * 15 August 2022 (Assumption Day) * <i>* Days already included in 2021/22 school holidays (or falls on a Sunday)</i> <i>** Day already included in 2021/22 school holidays for zones A and B</i>
Starting date of teachers' school year	1 September 2021
End of teachers' school year	7 July 2022

Source: Eurydice.

Additional notes

Zone A: Besançon, Bordeaux, Clermont-Ferrand, Dijon, Grenoble, Limoges, Lyon, Poitiers

Zone B: Aix-Marseille, Amiens, Lille, Nancy-Metz, Nantes, Nice, Normandie, Orléans-Tours, Reims, Rennes, Strasbourg

Zone C: Créteil, Montpellier, Paris, Toulouse, Versailles

⁽³⁾ Information on additional holidays which are specific to the area Alsace and Moselle or to French overseas territories can be found here: <https://www.service-public.fr/particuliers/vosdroits/F2405>

France (continued)

	Primary education	General secondary education
Total number of academic/school days	36 weeks (including public/religious holidays) <i>ISCED 1: 162 days (4.5 days/week)¹</i>	36 weeks (including public/religious holidays) <i>ISCED 24: 162 days (4.5 days/week)¹</i> <i>ISCED 34: 180 days (5 days/week)¹</i>
Total number of holidays	16 weeks	16 weeks

Additional notes

¹- The annual hours of instruction, set by the curriculum for each subject and for each level of education, must be respected regardless of the number of public holidays within a week. **The school year is not set in terms of days but in weeks.** It consists of 36 weeks of work; the public holidays included in the current school year are not deducted. (cf. [Code de l'éducation](#), Article L521-1)

Primary education

The school week includes for all students twenty-four hours of instruction, spread over nine half-days.

Instruction time is provided 4,5 days a week (Monday, Tuesday, Thursday and Friday, all day, and on Wednesday morning), with a maximum of 24 hours of instruction per week, 5 1/2 hours of instruction maximum per day and 3 1/2 hours maximum per half-day. Lunchtime break cannot be shorter than one hour and a half.

Since September 2017, by way of derogation ⁽⁴⁾ from this general framework, public primary schools have been allowed to set up 3 other types of organization of the school week and distribute the 24 hours of weekly instruction:

- over 4,5 days (Mon, Tues, Thurs and Fri, all day, and on Saturday morning, instead of Wednesday morning); or
- over 8 half-days which should include 5 mornings. In this case, extra-curricular activities are gathered together in one afternoon; or
- over 4 days (Mon, Tue, Thurs, Fri) – instead of four and a half – as long as instruction time does not exceed six hours per day and three and a half hours per half day. Moreover, it is possible to shorten holidays to compensate for the reduced weekly instruction time.

Secondary education

A 4.5-day week (Monday to Friday) is most commonly practiced at lower secondary level and a 5-day week at upper secondary level where students often have school on Saturday morning.

⁽⁴⁾ Source: Décret n° 2017-1108 du 27 juin 2017 relatif aux dérogations à l'organisation de la semaine scolaire dans les écoles maternelles et élémentaires publiques:
<https://www.legifrance.gouv.fr/eli/decret/2017/6/27/MENE1716127D/jo/texte>

Germany

Organisation of school time in primary and general secondary education – 2021/22 school year

Starting date of students' school year	1 August 2021 begin of official school year <i>(for details see table I)</i>
End of students' school year	31 July 2022 end of official school year <i>(for details see table I)</i>
Autumn holidays	4 to 12 days staggered between 4 October and 6 November 2021 <i>(for details see table II)</i>
Christmas/New Year	6 to 13 days staggered between 22 December 2021 and 8 January 2022 <i>(for details see table II)</i>
Winter/Carnival	0 to 13 days staggered between 29 January and 26 February 2022 <i>(for details see table II)</i>
Spring/Easter	4 to 11 days staggered between 28 February and 23 April 2022 <i>(for details see table II)</i>
Third term	0 to 11 days staggered between 23 May and 18 June 2022 <i>(for details see table II)</i>
Summer	6 weeks staggered between 27 June and 12 September 2022 <i>(for details see table I)</i>
Public/religious holidays	Up to 10 days, depending on the <i>Land</i>
Starting date of teachers' school year	1 August 2021 (official date)
End of teachers' school year	31 July 2022 (official date)

Source: Eurydice

TABLE I: Specification for starting/end of students' school year and summer holidays

	Beginning of students' school year 2021/22	End of students' school year 2021/22	Summer holidays 2022
Hamburg	5 August 2021	6 July 2022	7 July – 17 August
Berlin	9 August 2021	6 July 2022	7 July – 19 August
Brandenburg	9 August 2021	6 July 2022	7 July – 20 August
Mecklenburg-Vorpommern / Schleswig-Holstein	2 August 2021	18 June 2022	4 July – 13 August
Bremen / Niedersachsen	2 September 2021	13 July 2022	14 July – 24 August
Rheinland-Pfalz / Hessen / Saarland	30 August 2021	22 July 2022	25 July – 2 September
Sachsen / Thüringen	6 September 2021	15 July 2022	18 July – 26/27 August
Sachsen-Anhalt	2 September 2021	13 July 2022	14 July – 24 August
Nordrhein-Westfalen	18 August 2021	24 June 2022	27 July – 9 August
Baden-Württemberg	13 September 2021	22 July 2022	28 July – 10 September
Bayern	14 September 2021	29 August 2022	1 August – 12 September

Germany (continued)

TABLE II: Specification of shorter holiday periods

Land	Autumn 2021	Christmas / New Year 2021/22	Winter 2022	Spring / Easter 2022	3rd term 2022
Baden- Württemberg	2-11 November	23 Dec. – 8 Jan.	–	19-23 April	7-18 June
Bayern	2-5 November	24 Dec. – 8 Jan.	–	28 Febr. – 4 Mar./ 11-23 April	7-18 June
Berlin	11-23 October	24-31 December	29 Jan. – 5 Febr.	11-23 April	27 May/7 June
Brandenburg	11-23 October	23-31 December	31 Jan. – 5 Febr.	11-23 April	–
Bremen	18-30 October	23 Dec. – 8 Jan.	31 Jan. – 1 Febr.	4-19 April	27 May/7 June
Hamburg	4-15 October	23 Dec. – 4 Jan.	28 January	7-18 March	23-27 May
Hessen	11-23 October	23 Dec. – 8 Jan.	–	11-23 April	–
Mecklenburg- Vorpommern	2-9 October	22-31 December	5-17 February	11-20 April	27 May/3-7 June
Niedersachsen	18-29 October	23 Dec. – 7 Jan.	31 Jan. – 1 Febr.	4-19 April	27 May/7 June
Nordrhein- Westfalen	11-23 October	24 Dec. – 8 Jan.	–	11-23 April	–
Rheinland- Pfalz	11-22 October	23-31 December	21-25 February	13-22 April	–
Saarland	18-29 October	23 Dec. – 3 Jan.	21 Febr. – 1 Mar.	14-22 April	7-10 June
Sachsen	18-30 October	23 Dec. – 1 Jan.	12-26 February	15-23 April	27 May
Sachsen- Anhalt	25-30 October	22 Dec. – 8 Jan.	12-19 February	11-16 April	23-28 May
Schleswig- Holstein	4-16 October	23 Dec. – 8 Jan.	–	4-16 April	27-28 May
Thüringen	25 Oct. – 6 Nov.	23-31 December	12-19 February	11-23 April	27 May

Source: Eurydice.

Additional notes

In accordance with the *Hamburg Agreement* between the *Länder* on harmonisation in the school system, the school year begins on 1 August and ends on 31 July. The actual beginning and end depend on the dates of the summer holidays which vary from one year to the other.

Greece

Organisation of school time in primary and general secondary education – 2021/22

	Primary education	General secondary education
Starting date of students' school year	11 September 2021	11 September 2021
End of students' school year	15 June 2022	The teaching of subjects is conducted in two periods of four (4) terms each. Lessons end during the last week of May. The actual end date is subject to annual arrangement and it is set by a ministerial decision, issued by 30 April each year. The examination period follows. All procedures are completed by 30 June.
Christmas/New Year	2 weeks 24 December 2021 – 7 January 2022	2 weeks 24 December 2021 – 7 January 2022
Spring/Easter	2 weeks 18 April – 1 May 2022	2 weeks 18 April – 1 May 2022
Summer	Around 12 weeks 16 June – 11 September 2022	Around 10 weeks 1 July – 11 September 2022
National/religious holidays	28 October 2021 (National holiday) 17 November 2021 (National school celebration) 30 January 2022 (Religious school celebration, although Sunday this year) 7 March 2022 (Religious holiday-Clean Monday) 25 March 2022 (National holiday) 1 May 2022 (Labour Day, although Sunday this year) 13 June 2022 (Religious holiday-Whit Monday) and some local holidays	28 October 2021 (National holiday) 17 November 2021 (National school celebration) 30 January 2022 (Religious school celebration, although Sunday this year) 7 March 2022 (Religious holiday-Clean Monday) 25 March 2022 (National holiday) 1 May 2022 (Labour Day, although Sunday this year) 13 June 2022 (Religious holiday-Whit Monday) and some local holidays
Starting date of teachers' school year	1 September 2021	1 September 2021
End of teachers' school year	21 June 2022	30 June 2022

Additional notes

The official school year for both primary and secondary education lasts from 1 September each year until the 31 August next year (1 September 2021 – 31 August 2022).

At primary level, the didactic year lasts from 1 September until 21 June of the following year. ([Presidential Decree 79/2017](#), Government Gazette 109/issue A/1-8-2017: "Organisation and operation of pre-primary and primary schools").

At secondary level, the didactic year lasts from 1 September until 30 June of the following year ([79942/ΓΔ4 Ministerial Decision](#), Government Gazette 2019/issue B/31-05-2019: "Registrations, transfers, attendance and issues of organisation of school life in secondary education schools").

Due to the COVID-19 crisis, it is possible that there are any changes in the opening and closing dates of primary and secondary schools.

Hungary

Organisation of school time in primary and general secondary education – 2021/22

	Primary and lower secondary education	General upper secondary education
Starting date of students' school year	1 September 2021	1 September 2021
End of students' school year	15 June 2022	15 June 2022
Autumn holidays	25 October – 1 November 2021	25 October – 1 November 2021
Christmas/New Year holidays	22-31 December 2021	22-31 December 2021
Spring/Easter holidays	14-19 April 2022	14-19 April 2022
Summer holidays	11 weeks 16 June – 31 August 2022	11 weeks 16 June – 31 August 2022
Public/religious holidays	23 October 2021 (Saturday) (Day of the Hungarian Revolution of 1956) 15 March 2022 (The Day of the Hungarian Revolution of 1848) 1 May 2022 (Sunday) (Labour Day) 6 June 2022 (Whit Monday)	23 October 2021 (Saturday) (Day of the Hungarian Revolution of 1956) 15 March 2022 (The Day of the Hungarian Revolution of 1848) 1 May 2022 (Sunday) (Labour Day) 6 June 2022 (Whit Monday)
Starting date of teachers' school year	Institutional autonomy takes into account the concerning legal provision*.	Institutional autonomy takes into account the concerning legal provision*.
End of teachers' school year	Institutional autonomy takes into account the concerning legal provision*.	Institutional autonomy takes into account the concerning legal provision*.

Source: Eurydice.

Additional notes

According to the Act on Public Education, the minister responsible for education specifies the schedule of the school year in a ministerial decree. The Act stipulates that the school year starts on the first working day of September every year and finishes on the last working day prior to 16 June.

Thus schools have no autonomy in changing the first and last day of the school year but they have some autonomy in giving extra holidays e.g. before or after public holidays or school holidays for practical reasons if they provide teaching on a regular resting day (e.g. weekend) instead.

In addition to compulsory school days, schools also have six (in basic schools) or seven (in upper secondary general schools) non-teaching days for educational purposes.

Holidays at schools providing minority education may differ from the above described school holidays to celebrate national traditions.

* Act No. CXC of 2011 Public Education Act, Act No. XXXIII of 1992 on the legal status of public servants and the Government Decree No. 326/2013 stipulate that the holidays of teachers primarily have to be given during the summer holiday. If not all days can be taken during that, the rest has to be provided during the autumn, winter or spring holidays or teaching days. (For teachers the autumn, winter and spring holidays are regarded as workdays without teaching).

Iceland

Organisation of school time in primary and general secondary education – 2020/21

	Primary and lower secondary education	General upper secondary education
Starting date of students' school year	Officially from 20 August but municipalities may decide on an alternative date of school start. For the school year 2021/22, the most common day for school start is the 23 August 2021.	Officially as of the 18 August each year but each upper secondary school may decide on a detailed date of school start, in consultation with the relevant school council and the school's teachers. For the school year 2021/22, the most common date is 20 August 2021.
End of students' school year	Officially before 10 June but municipalities may decide on an alternative date of end of students' school year. For the school year 2021/22, the most common day for end of school date is 8 June 2022.	Officially as of 31 May but each upper secondary school may decide on a different date as end of students' school year, after consulting with the school council and staff. For the school year 2021/22, most schools finish the school year during the last days of the working week in May or at the latest on 31 May 2021.
Autumn holidays	Municipalities may decide but normally autumn holidays are taken in October, a period of 2-3 working days. In 2021, these are commonly between 22 and 26 October.	Upper secondary schools may decide on the length but in 2021, normally a period of 2 working days in October.
Christmas/New Year	From 23 December 2021 until 1 January 2022, including both days.	Upper secondary schools may decide on the length but in 2021, usually between 19 December 2021 and 3 January 2022, both days included.
Winter/Carnival	Municipalities may decide but normally 2 days in February. During the reporting period, the most common off-days for winter/carnival are 17 and 18 February 2022, including both days.	Upper secondary schools may decide on the length but in 2022, normally between a period of 2-3 working days in February or early March.
Spring/Easter	Municipalities may decide but commonly between 9 and 18 April 2022, including both days, or a total of six working days plus both weekends.	Upper secondary schools may decide on the length but in 2022, normally between 11 and 18 April, both days included.
Summer	Between 8 June and 23 August 2022	Between 31 May and 18 August 2022

Iceland (continued)

Organisation of school time in primary and general secondary education – 2021/22

	Primary and lower secondary education	General upper secondary education
Public/religious holidays	24 December 2021 25 December 2021 26 December 2021 1 January 2022 14 April 2022 15 April 2022 17 April 2022 18 April 2022 21 April 2022 1 May 2022 26 May 2022 Public holidays outside the official school year: 5 June 2022 6 June 2022 17 June 2022 2 August 2022	24 December 2021 25 December 2021 26 December 2021 1 January 2022 14 April 2022 15 April 2022 17 April 2022 18 April 2022 21 April 2022 1 May 2022 26 May 2022 Public holidays outside the official school year: 5 June 2022 6 June 2022 17 June 2022 2 August 2022
Starting date of teachers' school year	Teachers' school year normally starts 4 working days before the official school start (around 20 August each year). In 2021/22 the school year starts on 23 August, so this would be on the 17 August 2021 but this is municipal choice.	Teachers' school year normally starts 2 working days before the official school start (around 18 August each year). In 2021/22 this would be on 16 August 2021.
End of teachers' school year	Teachers' school year normally ends 4 working days after the official school end date (around 10 June). In 2021/22 the student school year ends on 8 June 2022, marking end of the staff school year on 14 June 2022.	Teachers' school year normally ends 2 working days after the official school end date (of 31 May). In 2021/22 the student school year usually ends on 27 May, marking the end of the staff school year or during the reporting period to be on 31 May 2022.

Additional notes

According to the Icelandic Teachers' Union collective agreement between The Association of Teachers in Primary and Lower Secondary Schools and Icelandic Association of Local Authorities, compulsory schoolteachers shall have 8 days accumulatively for preparation before the formal school year commences and after formal school year ends. Furthermore, teachers shall have 5 preparation days during the year. Upper secondary school teachers have a total of 4 working days before the beginning and/or the end of the school year. Total of school days for primary and lower secondary education are 180 per school year, thereof 170 in active teaching or examination. A total of 10 days may be distributed to other school activity days such as school commence ceremony, school ending ceremony, parental day, etc. As of the school year 2017/18, the total number of school days for upper secondary education was set to be 180 days of active teaching and examination days.

Ireland

Organisation of school time in primary and general secondary education – 2021/22

	Primary education	General secondary education
Starting date of students' school year	First week of September 2021 ⁽¹⁾	Circa 24 August 2021
End of students' school year	End of June 2022 ⁽²⁾	End of State Examinations in June 2022
Autumn holidays	1 week 25-29 October 2021 (inclusive)	1 week 25-29 October 2021 (inclusive)
Christmas/New Year	2 weeks 23 December 2021 – 5 January 2022 (inclusive)	2 weeks 23 December 2021 – 5 January 2022 (inclusive)
Winter/Carnival	2 days 24-25 February 2022 ⁽³⁾	1 week 21-25 February 2022 (inclusive)
Spring/Easter	2 weeks 11-22 April 2022 (inclusive)	2 weeks 11-22 April 2022 (inclusive)
Summer	About 9 weeks End of June until week of 1 September 2022	About 12 weeks June, July and most of August 2022
Public/religious holidays	17 March 2022 2 May 2022 6 June 2022 and some religious holidays	17 March 2022 2 May 2022 6 June 2022 and some religious holidays
Starting date of teachers' school year	1 September 2021	1 September 2021
End of teachers' school year	31 August 2022	31 August 2022

Source: Eurydice.

Additional notes:

Primary education

- ⁽¹⁾ In order to meet the overall requirement of 183 days at primary level, the school year will normally commence during the week in which 1st September falls. The exact date is determined locally at Board of Management level.
- ⁽²⁾ School may use their own discretion to determine the precise ending of the school year in June, providing it has met the overall requirement of 183 days.
- ⁽³⁾ Primary school may use 3 discretionary days to extend their Winter/Carnival break to an alternative option of a 5-day break. Circular 0005/2020 sets out the standardised school breaks at primary and post-primary level for the school years 2020/21, 2021/22 and 2022/23.

The arrangements for standardised closure at primary level (Circular 0005/2020) are agreed without prejudice to closure on specific days, within the overall requirement of 183 days at primary level, dictated by religious observance that is required in schools under patronage of different denominations or faiths. In the absence of an adequate number of discretionary days a school authority may choose to utilise a religious observation day for non-tuition purpose when planning the school year.

The existing arrangements for school breaks may provide some limited flexibility to schools on certain other days outside of the defined periods. The scheduling of such days must not be used to extend or modify the period set out above in respect of mid-term, Christmas and Easter breaks save where a school has been affected by extensive or prolonged school closures or religious observance requirements of a school under a particular patronage makes this necessary.

It was not a requirement of this agreement that the commencement or end of the school year either at primary or post primary level should be standardised.

General secondary

In accordance with Circular M29/95, the minimum number of teaching days per post-primary school will be 167. In addition and in accordance with Circular 0005/2020, holiday periods during the school year have been standardised, i.e. midterm breaks, Christmas and Easter holidays. Traditionally, formal instruction ends in post-primary schools on the Friday preceding the June bank holiday weekend. State examinations normally commence the following Wednesday. In order for schools to meet their requirement to be open for 167 days during 2021/22 school year, it is expected that post-primary schools will be open circa 24 August 2021.

The above holidays are standardised in accordance with Circular 0005/2020. Since the introduction of the standardised school calendar, many schools which would have traditionally opened on 1 September are now opening in late August in order to meet their full complement of days.

Italy

Organisation of school time in primary and general secondary education – 2021/22

	Primary education	General secondary education
Starting date of students' school year	Between 6 and 20 September 2021	Between 6 and 20 September 2021
End of students' school year	Between 4 and 16 June 2022	Between 4 and 16 June 2022
Autumn holidays	–	–
Christmas/New Year	14 to 17 days between 23-24 December 2021 and 6-9 January 2022	14 to 17 days between 23-24 December 2021 and 6-9 January 2022
Winter/Carnival	1-9 days in February/March 2022	1-9 days in February/March 2022
Spring/Easter	6 days between 14 and 19 April 2022, for all Regions	6 days between 14 and 19 April 2022, for all Regions
Third term	–	–
Summer	11-14 weeks between June and September 2022	11-14 weeks between June and September 2022
Public/religious holidays	1 November 2021 8 December 2021 25 April 2022 1 May 2022 2 June 2022 (and Saints' days depending on the Regions)	1 November 2021 8 December 2021 25 April 2022 1 May 2022 2 June 2022 (and Saints' days depending on the Regions)
Starting date of teachers' school year	1 September 2021	1 September 2021
End of teachers' school year	31 August 2022	31 August 2022

Source: Eurydice.

Italy (continued)

Specification of terms for the beginning and the end of the school year 2021/22

Primary and general secondary education		
	Beginning 2021	End 2022
Abruzzo	13 September	8 June
Alto Adige (Bolzano)	6 September	11 June (upper secondary schools) 16 June (primary and lower secondary schools)
Basilicata	13 September	8 June
Calabria	20 September	9 June
Campania	15 September	8 June
Emilia-Romagna	13 September	4 June
Friuli-Venezia Giulia	16 September	11 June
Lazio	13 September	8 June
Liguria	15 September	10 June
Lombardia	13 September	8 June
Marche	15 September	4 June
Molise	15 September	8 June
Piemonte	13 September	8 June
Puglia	20 September	9 June
Sardegna	14 September	8 June
Sicilia	16 September	10 June
Toscana	15 September	10 June
Trentino (Trento)	13 September	10 June
Umbria	13 September	9 June
Valle d'Aosta	13 September	8 June
Veneto	13 September	8 June

Additional notes

Schools can adjust the school calendar, established by the Regions, to the PTOF's requirements (the PTOF is the basic document of the cultural and planning identity of each school. It defines every three years the curricular, extra-curricular, educational and organisational projects of each school). Schools can organise in a flexible way the overall and single-subject timetable, provided that lessons spread over a minimum of five days per week and that the prescribed number of hours for the single subjects is complied with. The school year begins between the 1st and the 3rd week of September and finishes between the 1st and the 3rd week of June. The school adaptations of the school time should guarantee at least 200 days of lesson in the school year.

According to school autonomy, schools have up to 5 or 6 days available, which are foreseen for the suspension of educational activities.

Latvia

Organisation of school time in primary and general secondary education – 2021/22

	Integrated primary and lower secondary education	General upper secondary education
Starting date of students' school year	1 September 2021	1 September 2021
End of students' school year	31 May 2022	31 May 2022
Autumn holidays	1 week 18-22 October 2021	1 week 18-22 October 2021
Winter holidays (Christmas/New Year)	2 weeks 22 December 2021 – 4 January 2022	2 weeks 22 December 2021 – 4 January 2022
Spring/Easter	1 week 14-18 March 2022	1 week 14-18 March 2022 21-25 March 2022 (for the 12th class)
Summer	13 weeks 1 June – 31 August 2022	13 weeks 1 June – 31 August 2022
Public/religious holidays	18 November 2021 (Proclamation of the Republic of Latvia) 15-18 April 2022 (Easter) 4 May 2021 (Restoration of Independence of the Republic of Latvia)	18 November 2021 (Proclamation of the Republic of Latvia) 15-18 April 2022 (Easter) 4 May 2021 (Restoration of Independence of the Republic of Latvia)
Starting date of teachers' school year	See Additional notes	See Additional notes
End of teachers' school year	See Additional notes	See Additional notes

Source: Eurydice.

Additional notes

Single structure compulsory education (integrated primary and lower secondary education (*pamatizglītība*)): end of the school year for the 9th class: 14 June 2022.

Upper secondary education: end of the school year for the 12th class: 21 June 2022.

The school year is divided in two semesters: the first from 1 September to 21 December 2021 and the second from 5 January to 31 May 2022 (and to 14 June for the 9th class and 21 June for the 12th class).

Education institutions decide when to carry out an additional 1 week long holidays in the second semester for the 1st class.

Extension of the school year for classes 1-8 and 10-11 may be made if specific circumstances hindering education process arise during the school year (e.g. extreme temperature, strike, emergency situation in school, etc.).

Holidays (summer 2022): These are the dates for the official summer holiday period for classes 1-8 and 10-11.

Public holidays: When the specific holidays of 18 November (Proclamation of the Republic of Latvia) and 4 May (Restoration of Independence of the Republic of Latvia) fall on Saturday or Sunday, the holiday is transferred to the next working day.

Teachers: The teachers' school year concurs fully with students' year, but normally is longer and starts earlier, though the end and the start date is not defined officially. Teachers have the right to receive 8 weeks of paid annual leave in summer.

Malta

Organisation of school time in primary and general secondary education – 2021/22

	Primary education	General secondary education
Starting date of students' school year	29 September 2021	29 September 2021
End of students' school year	28 June 2022	28 June 2022
Autumn holidays	1, 2, 3 November 2021	1, 2, 3 November 2021
Christmas/New Year	23 December 2021 – 6 January 2022	23 December 2021 – 6 January 2022
Winter/Carnival	28 February 2022 and 1, 2 March 2022	28 February 2022 and 1, 2 March 2022
Spring/Easter	13-22 April 2022	13-22 April 2022
Summer	30 June – 27 September 2022	30 June – 27 September 2022
Public/religious holidays falling on week days	8 December 2021 10 February 2022 31 March 2022 7 June 2022 29 June 2022	8 December 2021 13 December 2021 10 February 2022 31 March 2022 15 April 2022 7 June 2022 29 June 2022
Starting date of teachers' school year	27 September 2021	27 September 2021
End of teachers' school year	6 July 2022	6 July 2022

Additional notes

The annual examinations for primary school pupils take place from 22 June until 28 June 2022 and from 10 June until 28 June 2022 for secondary school students.

Year 6 students in primary schools sit for the End-of-Primary Benchmark Assessments held between the 23 and 31 May 2022.

During the month of June schools are on half-days.

Total number of school days in the primary and general secondary education including exam days is 165 days and total number of holidays during the school year is 26 days.

Liechtenstein

Organisation of school time in primary and general secondary education – 2021/22

	Primary education and general secondary education
Starting date of students' school year	17 August 2021
End of students' school year	1 July 2022
Total number of school days	182 days (39 school weeks excl. holidays)
Autumn holidays	2 weeks 2-17 October 2021
Christmas/New Year	2 weeks 24 December 2021 – 9 January 2022
Winter/Sports holidays	1 week 26 February – 6 March 2022
Spring/Easter	2.5 weeks 14 April – 1 Mai 2022
Summer	6 weeks 2 July – 16 August 2022
Public/religious holidays	8 September 2021 – Birth of the Blessed Virgin Marie (<i>Mariä Geburt</i>) 1 November 2021 – All Saints Day (<i>Allerheiligen</i>) 8 December 2021 – Feast of the Immaculate Conception (<i>Mariä Empfängnis</i>) 2 February 2022 – Candlemas (<i>Maria Lichtmess</i>) 19 March 2022 – St. Josephs Day (<i>Josefitag</i>) 17-18 April 2022 – Easter Sunday/Easter Monday (<i>Ostern/Ostermontag</i>) 1 May 2022 – Labour Day (<i>Tag der Arbeit</i>) 26-27 May 2022 – Ascension Day (<i>Auffahrt</i>) 5-6 June 2022 – Whitsuntide/Whit Monday (<i>Pfingsten/Pfingsmontag</i>) 16-17 June 2022 – Corpus Christi (<i>Fronleichnam</i>)
Starting date of teachers' school year	1 August 2021
End of teachers' school year	31 July 2022

Source: Office of Education Liechtenstein.

Nation School Calendar 2019/20 – 2021/22: https://www.llv.li/files/sa/schulferienkalender_2019-22.pdf

Lithuania

Organisation of school time in primary and general secondary education – 2021/22

	Primary education	General secondary education
Starting date of students' school year	1 September 2021	1 September 2021
End of students' school year	*	**
Autumn holidays	3-5 November 2021	3-5 November 2021
Christmas/New Year	27 December 2021 – 7 January 2022	27 December 2021 – 7 January 2022
Winter/Carnival	14-18 February 2022	14-18 February 2022
Spring/Easter	19-22 April 2022	19-22 April 2022
Summer	***	***
Public/religious holidays	1-2 November 2021 24-26 December 2021 1 January 2022 16 February 2022 11 March 2022 17-18 April 2022 1 May 2022 8 May 2022 5 June 2022 24 June 2022 6 July 2022 15 August 2022	1-2 November 2021 24-26 December 2021 1 January 2022 16 February 2022 11 March 2022 17-18 April 2022 1 May 2022 8 May 2022 5 June 2022 24 June 2022 6 July 2022 15 August 2022
Starting date of teachers' school year	Following the general teaching plans and subject to the agreement of the school head and teacher	Following the general teaching plans and subject to the agreement of the school head and teacher
End of teachers' school year	Following the general teaching plans and subject to the agreement of the school head and teacher****	Following the general teaching plans and subject to the agreement of the school head and teacher****

Source: General Teaching Plans of Primary, Lower and Upper-Secondary Education Curricula for 2021-2022 and 2022-2023, No V-688, 3 May 2021.

Additional note

* The duration of the education process for primary education – 175 days of education.

** The duration of the education process for 5-10 grade students and for the I-II gymnasiums class – 185 days of education, for the III gymnasiums class – 180 days of education, and for the pupils of the IV gymnasium class – 165 days of education.

*** The beginning of summer holidays is determined by the head of the school, in agreement with the school council and the owner of the institution. Summer holidays for students of IV gymnasiums class start after the end of the matura examination session set by the Minister of Education and Science.

**** According to the Labour Code, the annual amount of leave for teachers is legislated as 40 work days. Normally, it is recommended that teachers take their annual leave during school summer holidays (i.e. teachers' leave is normally determined by the school calendar).

Luxembourg

Organisation of school time in primary and general secondary education – 2021/22

	Primary education	General secondary education
Starting date of students' school year	15 September 2021	15 September 2021
End of students' school year	15 July 2022	15 July 2022
Autumn holidays	1 week 30 October – 7 November 2021	1 week 30 October – 7 November 2021
Christmas/New Year	2 weeks 18 December 2021 – 2 January 2022	2 weeks 18 December 2021 – 2 January 2022
Winter/Carnival	1 week 12-20 February 2022	1 week 12-20 February 2022
Spring/Easter	2 weeks 2-18 April 2022	2 weeks 2-18 April 2022
Whitsun	1 week 21-29 May 2022	1 week 21-29 May 2022
Summer	8 weeks 16 July – 14 September 2022	8 weeks 16 July – 14 September 2022
Public/religious holidays	1 November 2021 (All Saints' Day) 18 April 2022 (Easter Monday) 1 May 2022 (Labour Day) 9 May 2022 (Europe Day) 26 May 2021 (Ascension Day) 6 June 2022 (Whit Monday) 23 June 2022 (National Holiday) 15 August 2022 (Assumption)	1 November 2021 (All Saints' Day) 18 April 2022 (Easter Monday) 1 May 2022 (Labour Day) 9 May 2022 (Europe Day) 26 May 2022 (Ascension Day) 6 June 2022 (Whit Monday) 23 June 2022 (National Holiday) 15 August 2022 (Assumption)
Starting date of teachers' school year	15 September 2021	15 September 2021
End of teachers' school year	15 July 2022	15 July 2022

Total number of school days from 15 September to 15 July: 179 days (weekends not included)

Total number of holidays from 15 September to 15 July: 39 days (weekend & summer break not included)

Montenegro

Organisation of school time in primary and general secondary education – 2021/22

	Primary education	General secondary education
Starting date of students' school year	1 September 2021	1 September 2021
End of students' school year	10 June 2022 19 May 2022 (in the final year)	10 June 2022 19 May 2022 (in the final year)
Christmas/New Year/Winter	25-26 December 2021 1-2 January 2022 7-8 January 2022	25-26 December 2021 1-2 January 2022 7-8 January 2022
Winter/Carnival	3-23 January 2022	3-23 January 2022
Summer	11 June – 31 August 2022 20 May – 31 August 2022 for students of the final grade	19 June – 31 August 2022 29 May – 31 August 2022 for students of the final grade Note: for the students in vocational education who have professional internship (10-15 days), the summer vacation begins after the end of the internship.
Public holidays (national/religious/occasional)	1-2 January 2022 (New Year's Day) 1-2 May 2022 (International Labour Day) 21-22 May 2022 (Independence Day) 13-14 July 2022 (Statehood Day)	1-2 January 2022 (New Year's Day) 1-2 May 2022 (International Labour Day) 21-22 May 2022 (Independence Day) 13-14 July 2022 (Statehood Day)
Starting date of teachers' school year	9 August 2021	9 August 2021
End of teachers' school year	1 July 2022	1 July 2022

Additional notes

Total number of teaching days for students of primary and secondary school is 182, while for the final year students of primary and secondary school total number of teaching days is 169.

In accordance with **Law on National and Other Holidays** (Official Gazette of the Republic of Montenegro, no 27/2007 and Official Gazette of Montenegro, no 36/2013), national holidays in Montenegro include: 21 May (Independence Day) and 13 July (Statehood Day).

Holidays in Montenegro are also: 1 January (New Year) and 1 May (Labour Day).

National and other holidays are celebrated for two days, on the day of the holiday and the day that follows.

Holidays are non-working days.

If a holiday falls on Sunday, the following two days are non-working days.

If the second day of the holiday falls on Sunday, the following first day is a non-working day.

Religious holidays are non-working days.

Source: Eurydice.

The Netherlands

Organisation of school time in primary and general secondary education – 2021/22

	Primary education	General secondary education
Starting date of students' school year	Northern region: 23 August 2021 Central region: 30 August 2021 Southern region: 6 September 2021	Northern region: 23 August 2021 Central region: 30 August 2021 Southern region: 6 September 2021
End of students' school year	Northern region: 16 July 2022 Central region: 9 July 2022 Southern region: 23 July 2022	Northern region: 16 July 2022 Central region: 9 July 2022 Southern region: 23 July 2022
Autumn holidays*	Northern region: 16-24 October 2021 Central region: 16-24 October 2021 Southern region: 23-31 October 2021	Northern region: 16-24 October 2021 Central region: 16-24 October 2021 Southern region: 23-31 October 2021
Christmas/New Year holidays	25 December 2021 - 9 January 2022	25 December 2021 - 9 January 2022
Winter/Carnival* (Spring Holiday or Crocus Holiday)	Northern region: 19-27 February 2022 Central region: 26 February – 6 March 2022 Southern region: 26 February – 6 March 2022	Northern region: 19-27 February 2022 Central region: 26 February – 6 March 2022 Southern region: 26 February – 6 March 2022
Spring/Easter* (May Holiday)	30 April – 8 May 2022	30 April – 8 May 2022
Summer	Northern region: 16 July – 28 August 2022 Central region: 9 July – 21 August 2022 Southern region: 23 July – 4 September 2022	Northern region: 16 July – 28 August 2022 Central region: 9 July – 21 August 2022 Southern region: 23 July – 4 September 2022
Public holidays (national/religious/occasional)	18 April 2022 (Easter Monday) 27 April 2022 (King's Birthday) 5 May 2022 (Liberation day) 26 May 2022 (Ascension Day) 6 June 2022 (Whit Monday)	18 April 2022 (Easter Monday) 27 April 2022 (King's Birthday) 5 May 2022 (Liberation day) 26 May 2022 (Ascension Day) 6 June 2022 (Whit Monday)
Starting date of teachers' school year	See Additional notes	See Additional notes
End of teachers' school year	See Additional notes	See Additional notes

The Netherlands (continued)

Additional notes

The school year officially runs from 1 August to 31 July of the following year. The start and end of the school year of the individual schools is according to the region (Northern, Central and Southern region).

Dates for the **summer holidays** are decided by the Ministry of Education, Culture and Science; the holiday period is staggered over 3 regions (compulsory dates for all schools); also dates for **Christmas holidays** and **May holidays (one week)** are decided by the Ministry; other holidays are recommended by the Ministry. The dates of the autumn and spring holidays are decided by the competent authority of the school (school board), although the Ministry does publish advisory dates.

A balanced distribution of teaching time is important in the Netherlands. Schools have the opportunity to deviate from the recommended data, but they have to take into account the wishes and expectations of the parents/caregivers. The Primary Education Act requires schools to provide at least 7 520 teaching hours over the eight years that children attend school.

- In the Netherlands Carnival holiday is called Spring Holiday or Crocus Holiday
- If the recommended period for the Spring Holiday does not fit with Carnival week; it can be expected that schools, especially in the Southern areas of the Netherlands, will not follow the recommendations and will close for Carnival.

The **teachers'** school year is similar to the students' school year. However, it is at the school's discretion to decide whether teachers are expected to end or start later (in order to attend meetings, for preparation of timetable, other non-teaching activities, etc.)

School days 2021/22

The Primary Education Act requires schools to provide at least 7520 teaching hours over the eight years that children attend school. That's an average of 940 hours per year. It is not really possible to provide a number of school days, because schools are free to decide this (but they have to meet the 7520 teaching hours over eight years). There are differences between schools, it is up to the schools autonomy.

For secondary education the amount of teaching hours is as follows:

- 3700 hours for VMBO (over 4 years)
- 4700 hours for HAVO (over 5 years)
- 5700 hours for VWO (over 6 years)

Schools can choose how they organize their curriculum. As long as each student has the opportunity to follow a program that meets the statutory hours norm. And as long as students receive at least 189 days a year teaching (schooldays).

Holidays 2021/2022

Secondary education: Per school year there is a maximum of up to 71 free days of school: 55 holidays, 4 public holidays and 12 rostered days off.

So there is also a lot of autonomy for schools.

North Macedonia

Organisation of school time in primary and general secondary education – 2021/22

	Primary education	General secondary education
Starting date of students' school year	1 September 2021	1 September 2021
End of students' school year	9 June 2022	*) 9 June 2022
Christmas/New Year	31 December 2021 – 19 January 2022	31 December 2021 – 19 January 2022
Spring/Easter	22-25 April 2022	22-25 April 2022
Third term	<p>13-24 June 2022: organization of additional classes, remedial exams and class exams.</p> <p>15-19 August 2022: Preparatory education and classes, consultations and other forms of assistance for the students who need to take remedial exams and class exams, and conduction of all the above.</p>	<p>20-27 May 2022 (public schools): Preparatory education and classes, consultations and other forms of assistance for the students (of final year of secondary education that need to pass state matura, school matura or final exam in June exams term) who need to take remedial exams, yearly exam, additional exams, exams for faster progress, matura and final exams. For these students the remedial exams, yearly exams, additional exams and exams for faster progress in the May exams term will be organized in the period of 20 - 27 May 2022.</p> <p>15-30 June 2022 (public schools): Preparatory education and classes, consultations and other forms of assistance for the students (of final year of secondary education that need to pass state matura, school matura or final exam in August exams term) who need to take remedial exams, yearly exam, additional exams, exams for faster progress, matura and final exams. For these students the remedial exams, yearly exams, additional exams and exams for faster progress in the June exams term will be organized in the period of 15 - 30 June 2022.</p> <p>15-22 June 2022 and 9-15 August 2022 (public schools): Preparatory education and classes, consultations and other forms of assistance for the students (for the students of first, second and third year of education) who need to take remedial exams, yearly exam, additional exams and exams for faster progress. For these students the remedial exams, yearly exams, additional exams and exams for faster progress in the June exams term will be organized in the period of 15 - 30 June 2022, and in the August exams term will be organized in the period of 9 - 19 August 2022.</p>
Summer	10 June – 31 August 2022	10 June – 31 August 2022

North Macedonia (continued)

	Primary education	General secondary education
Public holidays (national/religious/occasional)	8 September 2021 (Independence day) 11 October 2021 (Uprising day) 23 October 2021 (Day of the revolutionary struggle) 8 December 2021 (St. Clement day) 1 January 2022 (New Year) 7 January 2022 (Ortodox Christmas) 22-25 April 2022 (Orthodox Easter) 1 May 2022 (Labour day) 2 May 2022 (Ramadan) 24 May 2022 (St. Cyril and Methodius) 2 August 2022 (Republic day)	8 September 2021 (Independence day) 11 October 2021 (Uprising day) 23 October 2021 (Day of the revolutionary struggle) 8 December 2021 (St. Clement day) 1 January 2022 (New Year) 7 January 2022 (Ortodox Christmas) 22-25 April 2022 (Orthodox Easter) 1 May 2022 (Labour day) 2 May 2022 (Ramadan) 24 May 2022 (St. Cyril and Methodius) 02 August 2022 (Republic day)
Starting date of teachers' school year	1 September 2021	1 September 2021
End of teachers' school year	31 August 2022	31 August 2022

Source: Eurydice.

*) The end of the school year for the fourth grade students in the general secondary schools, third and fourth grade students in vocational secondary schools, and the students of the fourth grade in the artistic vocational schools will be 19 May 2022.

Norway

Organisation of school time in primary and general secondary education – 2021/22

	Primary education See Additional note 1	General secondary education See Additional note 1
Starting date of students' school year	Between 16 and 23 August 2021	Same as primary education
End of students' school year	17 June 2022	Same as primary education
Autumn holidays	1 week (some only 2-3 days) between 3 and 24 September 2021 (week 40, 41 or 42)	Same as primary education
Christmas/New Year	Around 2 weeks between 20 December 2021 until week 1 in January 2022	Same as primary education
Winter/Carnival	1 week between 14 February and 4 March 2022 (Week 7, 8 or 9)	Same as primary education
Spring/Easter	Between 11 and 18 April 2022	Same as primary education
Third term	–	–
Summer	Around 8 weeks between 20 June and 19 August 2022	Same as primary education
Public/religious holidays	1 May 2022 (Labour Day) 17 May 2022 (National Day) 26 May 2022 (Ascension Day) 6 June 2022 (White Monday)	Same as primary education
Starting date of teachers' school year	See Additional note 2.	See Additional note 2.
End of teachers' school year	See Additional note 2.	See Additional note 2.

Additional notes

Note 1: According to The Education Act § 2.2 (primary and lower secondary schools) and 2.3 (upper secondary schools): The municipality/county issues regulations concerning school days and holidays for the pupils during the school year. These regulations shall be adapted to national tests and examinations.

The time allocated to teaching in school shall not be less than 38 school weeks within a framework of 45 consecutive weeks and 190 days (most common) during the school year.

Note 2: The teachers must work minimum 6 days more than the pupil's school year, for planning, evaluation, competence development, cooperation with colleagues, e.g.

Teacher working time is negotiated between teacher organisations and the organisation of local government (KS.no) and is described in a common agreement. <https://www.ks.no/contentassets/6dbd7044513c47e195a92aaf369d7b82/sfs-2213---undervisningspersonalet-i-kommunal-og-fylkeskommunal-grunnopplaring.pdf>

Poland

Organisation of school time in primary and general secondary education – 2021/22

	Primary education	General secondary education
Starting date of students' school year	1 September 2021	1 September 2021
End of students' school year	24 June 2022	24 June 2022
Autumn holidays	–	–
Christmas/New Year	23-31 December 2021	23-31 December 2021
Winter	2 weeks as specified for the following regions: 17-30 January 2022 kujawsko-pomorskie lubuskie małopolskie świętokrzyskie wielkopolskie 24 January – 6 February 2022 podlaskie warmińsko-mazurskie 31 January – 13 February 2022 dolnośląskie mazowieckie opolskie zachodniopomorskie 14-27 February 2022 lubelskie łódzkie podkarpackie pomorskie śląskie	2 weeks as specified for the following regions: 17-30 January 2022 kujawsko-pomorskie lubuskie małopolskie świętokrzyskie wielkopolskie 24 January – 6 February 2022 podlaskie warmińsko-mazurskie 31 January – 13 February 2022 dolnośląskie mazowieckie opolskie zachodniopomorskie 14-27 February 2022 lubelskie łódzkie podkarpackie pomorskie śląskie
Spring/Easter	14-19 April 2022	14-19 April 2022
Third term	–	–
Summer	25 June – 31 August 2022	25 June – 31 August 2022
Public/religious holidays	1, 11 November 2021 6 January 2022 3 May 2022 16 June 2022	1, 11 November 2021 6 January 2022 3 May 2022 16 June 2022
Starting date of teachers' school year	1 September 2021	1 September 2021
End of teachers' school year	24 June 2022	24 June 2022

Source: Eurydice.

Additional notes

In addition, the school head has the possibility to determine extra days off (a maximum of 8 for primary and 10 for upper secondary schools) that may be devoted to external tests and exams and/or religious festivals not registered as official public holidays.

The end of school year 2021/22 for final grade students in secondary education is 29 April 2022.

Teachers may be obliged to work for a maximum of 7 days a year during the school holidays.

Portugal

Organisation of school time in primary and general secondary education – 2021/22

	Primary education	General secondary education
Starting date of students' school year	Between 14 and 17 September 2021	Between 14 and 17 September 2021
End of students' school year	15 June 2022 – grades 5 and 6 30 June 2022 – grades 1 to 4	7 June 2022 – grades 9, 11 and 12 15 June 2022 – grades 7, 8 and 10
First term*	14/17 September – 17 December 2021	14/17 September – 17 December 2021
Christmas/New Year	20 to 31 December 2021	20 to 31 December 2021
Second term*	3 January – 5 April 2022	3 January – 5 April 2022
Winter/Carnival	28 February to 2 March 2022	28 February to 2 March 2022
Spring/Easter	6-18 April 2022	6-18 April 2022
Third term*	grades 5 and 6: 19 April – 15 June 2022 grades 1 to 4: 19 April – 30 June 2022	grades 9, 11, 12: 19 April – 7 June 2022 grades 7, 8 and 10: 19 April – 15 June 2022
Summer**	About 11-13 weeks	About 12-14 weeks
Public/religious holidays	5 October 2021 1 November 2021 1 December 2021 8 December 2021 15 April 2022 25 April 2022 10 June 2022 16 June 2022	5 October 2021 1 November 2021 1 December 2021 8 December 2021 15 April 2022 25 April 2022 10 June 2022
Starting date of teachers' school year	1 September	1 September
End of teachers' school year***	See Additional notes	See Additional notes

Source: Eurydice.

Additional notes

Council of Ministers Resolution n. ° 90/2021 broadens schools autonomy regarding the organization of school time. This recommendation establishes a set of measures aimed at recovering learning and skills development affected by the confinement and control measures of the COVID-19 pandemic. Amongst these measures is the generalization of the possibility of implementing a semester-based system of school terms in cases where it is considered more effective by the schools themselves.

The total number of instruction days varies between 162 and 180 days.

*Ordinance n. ° 181/2019, from 11 June grants further autonomy and flexibility to schools in terms of curricular organization: schools are allowed to structure their school time in two semesters and not in three terms. Schools that choose to do so will still be obliged to follow the central recommendations for number of school days, dates of holidays and for exams, as well as to fulfil the number of hours indicated for each grade.

** National examinations occur until the end of July.

*** Teachers' school year ends when they finish their responsibilities concerning the assessment of the students including the exams. Most common summer holidays' period for teachers is from 30 July to 30 August.

Romania

Organisation of school time in primary and general secondary education – 2021/22

	Primary education	General secondary education
Starting date of students' school year	13 September 2021	13 September 2021
End of students' school year	11 June 2022	11 June 2022
Autumn holidays	25-31 October 2021	–
Winter/Carnival	23 December 2021 – 9 January 2022	23 December 2021 – 9 January 2022
Spring/Easter	15 April – 1 May 2022	15 April – 1 May 2022
Summer	11 June 2022 until the date from September 2022 when courses will begin in the school year 2022/23	11 June 2022 until the date from September 2022 when courses will begin in the school year 2022/23
Public/religious holidays	30 November 2021 1 Decembre 2021 24 January 2022 1 June 2022	30 November 2021 1 Decembre 2021 24 January 2022 1 June 2022
Starting date of teachers' school year	1 September 2021	1 September 2021
End of teachers' school year	31 August 2022	31 August 2022

Source: Eurydice.

	Primary education	General secondary education
Total number of school weeks (including public/religious holidays)	33 weeks of courses	34 weeks of courses
number of school weeks – first semester	13 weeks of courses (13 September – 24 October; 1 November – 22 December 2021)	14 weeks of courses (13 September – 22 December 2021)
number of school weeks – second semester	20 weeks of courses (10 January – 14 April; 2 May – 10 June 2022)	20 weeks of courses (10 January – 14 April; 2 May – 10 June 2022)

Additional notes

1. According to the national legislation, the minister responsible for education specifies the schedule of the school year in a ministerial order.
2. The schools and the School Inspectorates will mark with specific events the 5 October 2021 = World Teachers' Day
3. One week (5 consecutive working days), from 8-14 April 2022, is dedicated to extracurricular and extra-school activities, within the National Programme *Other kind of school (Școala altfel)*, with a specific timetable.
4. In exceptional situations, depending on the local climatic conditions and school's specificity, the organisation of the school year can be modified at the request of schools, approved by the regional education authorities (County School Inspectorate).

Serbia

Organisation of school time in primary and general secondary education – 2021/22

	Primary and lower secondary education (primary school)	Upper secondary education (secondary school)
Starting date of students' school year	1 September 2021	
End of students' school year	Final (8th) grade: 7 June 2022 Other grades: 21 June 2022	Final (4th) grade in grammar schools: 24 May 2022 Final (3rd or 4th) grade in vocational secondary schools: 31 May 2022 Other grades: 21 June 2022
Autumn holidays	11-12 November 2021	12 November 2021
Christmas/New Year	(included in Winter/Carnival)	31 December 2021 – 3 January 2022
Winter/Carnival	31 December 2021 – 21 January 2022 <i>24 December 2021 – 16 January 2022 (Winter holidays in Autonomous Province of Vojvodina)</i>	4 January – 21 January 2022 <i>24 December 2021 – 10 January 2022 (Winter holidays in Autonomous Province of Vojvodina)</i>
Spring/Easter	22 April – 3 May 2022 <i>15-25 April 2022 (Spring holidays in Autonomous Province of Vojvodina)</i>	22-25 April 2022 and 1-3 May 2022 <i>15-25 April 2022 (Spring holidays in Autonomous Province of Vojvodina)</i>
Summer	22 June – 31 August 2022	Final (4th) grade in grammar schools and final (3rd or 4th) grade in vocational secondary schools: After the final exam – 31 August 2022 Other grades: 22 June – 31 August 2022
Public/religious holidays	21 October 2021 – public (working) holiday (Thursday) 11 November 2021 – national holiday (Thursday) 1-3 January 2022 – New Year holiday (Saturday, Sunday and Monday) 7 January 2022 – religious holiday (Christmas for Orthodox Christians) (Friday) 27 January 2022 – religious (working) holiday (St Sava's Day/all schools Saint patron's day) (Thursday) 14-16 February 2022 – national holiday (Monday, Tuesday and Wednesday) 22 April 2022 – public holiday (Holocaust Remembrance Day) (Friday) 22-25 April 2022 – religious holiday (Easter for Orthodox Christians) (Friday-Monday) 1-2 May 2022 – public holiday (Sunday and Monday) 9 May 2022 – public (working) holiday (Monday) 28 June 2022 – public (working) holiday public (Tuesday) <i>Orthodox Christians are also entitled to one day off for the saint patron's day (so called Slava).</i> Note <i>In addition to the religious holidays mentioned above which are related to the majority Orthodox Christians religious community, the members of other large religious communities in the country are entitled to have non-working days for their most important religious holidays:</i> <ul style="list-style-type: none"> • Islam religious community – 2 May 2022 (Ramadan) and 9 July 2022 (Curban Bayrami) • Jewish religious community – 16 September 2021 (Yom Kippur) and 16 April 2022 (Pasha) • Catholic and Protestant religious community – 25 December 2021 (Christmas) and 15-18 April 2022 (Easter) 	

Serbia (continued)

	Primary and lower secondary education (primary school)	Upper secondary education (secondary school)
Starting date of teachers' school year	Exact starting date of teachers' school year is determined at institutional (school) level. As required at central level, teachers have vacation days as any other employees (minimum is 20 days per year for teachers entering the profession), which they have to use during the school holidays. Teachers usually start the school year a couple of weeks before students (mid-August).	
End of teachers' school year	Exact end date of teachers' school year is determined at institutional (school) level. As required at central level, teachers have vacation days as any other employees (minimum is 20 days per year for teachers entering the profession), which they have to use during the school holidays. Teachers usually end the school year several weeks after students (mid-July).	

Source: Eurydice.

Additional notes

The Ministry of Education, Science and Technological Development of the Republic of Serbia issues the Regulations on school calendar for primary and secondary education each year for the forthcoming school year. The links to the original documents published on the Ministry webpage (in Serbian):

1. Primary education: <http://www.pravno-informacioni-sistem.rs/SlGlasnikPortal/viewdoc?uuiid=165ed40b-5b2f-4cea-b16b-d86a4dc6995c&actid=972903&doctype=og> and http://www.puma.vojvodina.gov.rs/dokumenti/_obrazovanje/skolski_kalendar/2021_2022/kalendar_osnovne_2021_2022.pdf (*Calendar for primary schools in Autonomous Province of Vojvodina*)
2. Secondary education: <http://www.pravno-informacioni-sistem.rs/SlGlasnikPortal/viewdoc?uuiid=6196ac05-d7a0-4191-9f06-3771802ba658&actid=972904&doctype=og> and http://www.puma.vojvodina.gov.rs/dokumenti/_obrazovanje/skolski_kalendar/2021_2022/kalendar_srednje_2021_2022.pdf (*Calendar for secondary schools in Autonomous Province of Vojvodina*)

Final grade students in both primary and secondary education finish the school year earlier in order to prepare for final and entrance exams.

School calendar also includes days pre-defined for pilot final exam and final exam for final grade students in primary education. These are 25-26 March 2022 – pilot final exam (Friday and Saturday) and 22-24 June 2022 – final exam (Wednesday, Thursday and Friday).

Primary and lower secondary education (primary school): the school calendar 2021/22 for grades 1 to 7 has a total of 36 working weeks (180 school working days). School calendar for the 8th (final) grade comprised 34 working weeks (170 school working days).

Upper secondary education (secondary school): in general upper secondary education, there are 37 working weeks (185 school working days) in grades 1 to 3, and 33 working weeks (165 school working days) in the final (4th) grade. In vocational upper secondary education, the calendar for all grades except the final comprised 37 working weeks (185 school working days), while the final grade's calendar (3rd or 4th) consists of 34 working weeks (170 school working days).

Holidays can be national (which are always non-working), public and religious (working or non-working). All in all, according to the school calendar, there are 11 holidays. In addition, both students and education staff who belong to different religious communities are allowed to be absent from school during religious holidays specific for their community (enumerated above).

Slovakia

Organisation of school time in primary and general secondary education – 2021/22

	Primary education	General secondary education
Starting date of students' school year	2 September 2021	2 September 2021
End of students' school year	30 June 2022	30 June 2022
Autumn holidays	28-29 October 2021	28-29 October 2021
Christmas/New Year	23 December 2021 – 7 January 2022	23 December 2021 – 7 January 2022
Winter/Carnival	4 February 2022 and then according to regions: 21-25 February 2022: Košice, Prešov 28 February – 4 March 2022: Bratislava, Nitra, Trnava 7-11 March 2022: Banská Bystrica, Žilina, Trenčín	4 February 2022 and then according to regions: 21-25 February 2022: Košice, Prešov 28 February – 4 March 2022: Bratislava, Nitra, Trnava 7-11 March 2022: Banská Bystrica, Žilina, Trenčín
Spring/Easter	Easter holidays 14-19 April 2022	Easter holidays 14-19 April 2022
Summer	1 July – 31 August 2022	1 July – 31 August 2022
Public/religious holidays	1 September 2021 15 September 2021 1 November 2021 17 November 2021 24-26 December 2021 1 January 2022 6 January 2022 15 and 18 April 2022 (Easter) 1 May 2022 8 May 2022 5 July 2022 29 August 2022	1 September 2021 15 September 2021 1 November 2021 17 November 2021 24-26 December 2021 1 January 2022 6 January 2022 15 and 18 April 2022 (Easter) 1 May 2022 8 May 2022 5 July 2022 29 August 2022
Starting date of teachers' school year	Usually one week before the beginning of the school year	Usually one week before the beginning of the school year
End of teachers' school year	Usually, one week after summer holidays begin	Usually, one week after summer holidays begin

Source: Eurydice.

Additional notes

Official school year lasts from 1st September to 31 August. The 1st September is a public holiday. If 2 September falls on a Friday, Saturday or Sunday starting date of school year is next Monday.

The total number of school days is 189.

Total number of holidays: 96 days (includes 62 working days, 24 weekends, 10 public/religious holidays).

Education Act (No. 245/2008 Coll., §150) states that head teachers may, for serious reasons, in particular for organisational and technical reasons, during school lessons permit for pupils of maximum of five (5) days off within the school year. In practice, schools often take this opportunity during the school year.

Usually, teachers work one week after beginning of summer holidays and one week before the beginning of the school year.

Slovenia

Organisation of school time in single structure education and general upper secondary education – 2021/22

	Single structure education	General upper secondary education
Starting date of students' school year	1 September 2021	1 September 2021
End of students' school year	24 June 2022 15 June 2022 (final grade)	24 June 2022 20 May 2022 (final grade)
Autumn holidays	1 week and 1 day 25 October – 1 November 2021	1 week and 1 day 25 October – 1 November 2021
Public/religious holidays	25 December 2021 (Christmas) 26 December 2021 (Independence and Unity Day)	25 December 2021 (Christmas) 26 December 2021 (Independence and Unity Day)
Christmas/New Year	1 week 27 December 2021 – 2 January 2022	1 week 27 December 2021 – 2 January 2022
Prešeren Day – Slovenian Cultural Holiday	8 February 2022	8 February 2022
Winter/Carnival	1 week 21-27 February 2022 (Western region) 28 February – 6 March 2022 (Eastern region)	1 week 21-27 February 2022 (Western region) 28 February – 6 March 2022 (Eastern region)
Spring holidays	1 week 27 April – 2 May 2022	1 week 27 April – 2 May 2022
Summer holidays	10 weeks 25 June – 31 August 2022	10 weeks 25 June – 31 August 2022
Public/religious holidays	18 April 2022 (Easter Monday)	18 April 2022 (Easter Monday)
Starting date of teachers' school year	10-15 days before students start school	10-15 days before students start school

Source: Eurydice.

Additional notes

Slovenia has a single structure compulsory school of nine years.

For pupils and upper secondary students, the school year officially begins on 1st September and ends on 31 August, however, the lessons end in June.

For teachers, the school year begins 10 to 15 days before the students start school, i.e. mid-August and ends in the beginning or mid-July. The exact duration depends on the days of annual leave allocated to an individual (22 to 35 days) and tasks and obligations appointed by the school head.

Spain

Organisation of school time in primary and general secondary education – 2021/22 ^(1, 2)

	Primary education	General secondary education
Starting date of students' school year	Between 6 and 13 September 2021	Between 7 and 16 September 2021
End of students' school year	Between 21 and 29 June 2022	Between 20 and 28 June ⁽³⁾ 2022
Christmas/New Year	At least 2 weeks between 22 December 2021 and 7 January 2022	At least 2 weeks between 22 December 2021 and 7 January 2022
Winter/Carnival	Between 1 and 3 days (depending on the Autonomous Community) ⁽⁴⁾	Between 1 and 3 days (depending on the Autonomous Community) ⁽⁴⁾
Spring/Easter	Between 5 and 12 days in the period between 7 and 24 April 2022	Between 5 and 12 days in the period between 7 and 24 April 2022
Summer	11 weeks between late June and mid-September	11 weeks between late June and mid-September
Public/religious holidays ⁽⁵⁾	Between 7 and 15 (5 of them common throughout the country and some specific of the different Autonomous Communities).	Between 7 and 15 (5 of them common throughout the country and some specific of the different Autonomous Communities).
Starting date of teachers' school year	1 September 2021	1 September 2021
End of teachers' school year	30 June 2022	30 June 2022 ⁽⁶⁾

Additional notes

⁽¹⁾ Dates vary according to the different Autonomous Communities, see the table below.

Total number: ⁽²⁾ The total minimum number of school days 175 in compulsory education in all Autonomous Communities, although there are some additional days in several Communities.

⁽³⁾ In the last year of post-compulsory upper general secondary education, classes finish two, three or four weeks earlier than in other stages. This time is meant for preparing entrance examinations to universities and the final evaluation of *Bachillerato*, among others.

Total number:

⁽⁴⁾ The Autonomous Community of Aragón will allocate three "non-school" days on 25, 28 February and 1 March, Illes Balears on 28 February, Castilla y León, Madrid and Castilla-La Mancha on 28 February and 1 March. The "non-school" days of Winter/Carnival ranges from 2 February to 4 March. Galicia will allocate three days for Carnival on 28 February, 1 and 2 March and Extremadura on 28 February and 1 March. In the case of La Rioja, it will be one day for "Winter rest day" on 14 March. In the Autonomous Community of Región de Murcia, the organisation of school time varies according to municipalities, the "non-school" days of Winter/Carnival ranges from 2 February to 4 March.

⁽⁵⁾ Unlike the previous year, this time Ceuta has not considered the inclusion of either the Sacrificial Easter or the Muslim Easter at the end of Ramadan. In the case of Eid Al Adha, it is expected that in 2022, it will be celebrated on 9 July, in the middle of the summer school vacation period, while Eid Al Fitr could be on 2 or 3 May and could coincide with the First of May, which is a labour holiday.

⁽⁶⁾ The management team of schools must stay in the school until 30 July.

Specification of terms for the starting and the end of students' school year 2021/22 in the different Autonomous Communities

	Primary education		General secondary education ⁽¹⁾	
	Beginning (2021)	End (2022)	Beginning (2021)	End (2022)
Andalucía	10 September	Between 22 and 24 June 22 June (Almería, Cádiz) 23 June (Huelva) 24 June (Córdoba, Granada, Málaga)	15 September	Between 22 and 24 June 22 June (Almería, Cádiz) 23 June (Huelva) 24 June (Córdoba, Granada, Málaga)

Spain (continued)

Specification of terms for the starting and the end of students' school year 2021/22 in the different Autonomous Communities (continued)

	Primary education		General secondary education ⁽¹⁾	
	Beginning (2021)	End (2022)	Beginning (2021)	End (2022)
Aragón	8 September	22 June	Between 8 and 13 September 8 September (ESO) 13 September (Bachillerato)	22 June
Principado de Asturias	9 September	21 June	14 September	24 June
Baleares	10 September	23 June	10 September	23 June
Canarias	9 September	23 June	Between 9 and 10 September 9 September (ESO) 10 September (Bachillerato)	23 June
Cantabria ⁽²⁾	7 September	23 June	8 September	24 June
Castilla y León	10 September	23 June	15 September	23 June
Castilla-La Mancha	9 September	21 June	9 September	21 June
Cataluña	13 September	22 June	13 September	22 June
Ceuta	10 September	22 June	10 September	22 June
Extremadura	10 September	21 June	Between 10 and 13 September 10 September (ESO) 13 September (Bachillerato)	21 June
Galicia	9 September	22 June	15 September	22 June
La Rioja	6 September	24 June	6 September	24 June
Madrid	7 September	24 June	8 September	24 June
Melilla	7 September	22 June	7 September	22 June
Región de Murcia ⁽³⁾	Between 7 and 9 September	Between 23 and 29 June	Between 13 and 16 September	Between 20 and 28 June
Comunidad Foral de Navarra ⁽⁴⁾	Between 8 and 10 September	Between 20 and 21 June	8 September	22 June
País Vasco ⁽⁴⁾	Not before 8 September	No later than 21 June	Not before 8 September	No later than 21 June
C. Valenciana	8 September	21 June	8 September	17 June

Additional notes

⁽¹⁾ In the last year of post-compulsory upper general secondary education, classes end two to four weeks earlier than in the rest of stages. This time is used to prepare the university admission examinations (and final evaluation of *Bachillerato*, among others).

⁽²⁾ In the Autonomous Community of Cantabria the school calendar follows a special pattern that differs from the rest of the country. There is a break of one week in November (2-5 Nov) and another break of 5 days in February (21-25 Feb). Easter and Christmas are similar to the rest of Autonomous Communities.

⁽³⁾ In the Autonomous Community of Región de Murcia: the beginning and end periods vary according to municipalities. Consequently, there is a range of days for such municipalities to establish their own starting and end dates of the school year in the different levels of education.

⁽⁴⁾ Autonomous Communities of Navarra and País Vasco: schools are free to establish their own calendar taking into account the limit starting and ending dates established by the educational authorities.

The school calendars in some autonomous communities can vary according to the current health situation.

Sweden

Organisation of school time in compulsory education (*grundskola*) and in general upper secondary education (*gymnasieskola*) – 2021/2022

	Single structure compulsory education (<i>grundskola</i>)	General upper secondary education (<i>gymnasieskola</i>)
Starting date of students' school year	Late in August	Late in August
End of students' school year	Mid-June	Mid-June
According to the School Ordinance and the Upper Secondary School Ordinance, a school year consists of at least 178 school days and at least 12 holidays – the exact dates vary on regional and municipality level. In addition to the school days and the holidays, schools are able to conduct five in-service training days (at most) for the staff.		
Autumn holidays	1 week between 11 October – 5 November 2022	1 week between 11 October – 5 November 2022
Christmas/New Year	Starts 17-22 December 2021 Ends 7-17 January 2022	Starts 17-22 December 2021 Ends 7-17 January 2022
Winter/Carnival	1 week between 14 February – 11 March 2022	1 week between 14 February – 11 March 2022
Spring/Easter	1 week between 11-22 April 2022	1 week between 11-22 April 2022
Summer	About 10 weeks	About 10 weeks
Public/religious holidays	15 April 2022 (Good Friday) 18 April 2022 (Easter Monday) 1 May 2022 (Labour Day) 26 May 2022 (Ascension Day) 6 June 2022 (National Day)	15 April 2022 (Good Friday) 18 April 2022 (Easter Monday) 1 May 2022 (Labour Day) 26 May 2022 (Ascension Day) 6 June 2022 (National Day)
Starting date of teachers' school year	Mid-August	Mid-August
End of teachers' school year	Mid-June	Mid-June

Source: Eurydice.

Additional notes

Sweden has a single structure compulsory school (10 years) with no differences between stages. Starting and finishing dates and dates for holidays vary on regional and municipality levels, dates here are indicative.

Teachers usually start their work earlier for planning etc. Continuous professional development (CPD) is the responsibility of the employer and it can take place when the pupils are in school or not.

Switzerland

Organisation of school time in primary and general secondary education – 2021/22

	Primary education	General secondary education
Starting date of students' school year	Staggered between 9 and 29 August 2021	Staggered between 9 and 29 August 2021
End of students' school year	Staggered between 15 June and 15 July 2022	Staggered between 15 June and 15 July 2022
Autumn holidays	Between 1 and 3 weeks staggered between 25 September and 7 November 2021	Between 1 and 3 weeks staggered between 25 September and 7 November 2021
Christmas/New Year	Between 1 and 2 weeks staggered between 18 December 2021 and 9 January 2022	Between 1 and 2 weeks staggered between 18 December 2021 and 9 January 2022
Winter/Carnival	Between 1 and 2 weeks staggered between 29 January and 13 March 2022	Between 1 and 2 weeks staggered between 29 January and 13 March 2022
Spring/Easter	Between 1 and 3 weeks staggered between 2 April and 22 May 2022	Between 1 and 3 weeks staggered between 2 April and 22 May 2022
Third term	–	–
Summer	Between 5 and 10 weeks staggered between 16 June and 28 August 2022	Between 5 and 10 weeks staggered between 16 June and 28 August 2022
Public/religious holidays	26 May 2022 (Ascension Day) 6 June 2022 (Whit Monday)	26 May 2022 (Ascension Day) 6 June 2022 (Whit Monday)
Starting date of teachers' school year	1 August 2021	1 August 2021
End of teachers' school year	31 July 2022	31 July 2022

Source: Eurydice.

Additional notes

According to Switzerland's federal structure, the starting date/end of students' school year (for details see Table I) and school holidays vary between cantons, in some cantons even between municipalities (for details see Table II).

With a few exceptions, the teachers' official school year starts 1st August and ends on 31 July. However, it is at the school's discretion to decide whether teachers are expected to start or end later (in order to attend meetings, to prepare for teaching, etc.).

The only national holiday is 1st August (National Day). All other public and religious holidays are fixed by the cantons. New Year's Day, Ascension and Christmas Day are the only holidays all cantons have in common. In most cantons Good Friday, Easter Monday, Whit Monday and Boxing Day are also official holidays.

Switzerland (continued)

TABLE I: Specification for starting/end of students' school year and summer holidays

Canton	Beginning of students' school year 2021/22	End of students' school year 2021/22	Summer holidays 2022
Aargau ⁽⁵⁾	9 August 2021	15 July 2022	16 July – 7 August
Appenzell Innerrhoden*	16 August 2021	1 July 2022	2 July – 15 August
Appenzell Ausserrhoden	16 August 2021	8 July 2022	9 July – 14 August
Bern*	16 August 2021	8 July 2022	9 July – 14 August
Basel-Landschaft	16 August 2021	1 July 2022	2 July – 14 August
Basel-Stadt	16 August 2021	1 July 2022	2 July – 14 August
Fribourg*	26 August 2021	8 July 2022	9 July – 24 August
Geneva	30 August 2021	1 July 2022	2 July – 21 August
Glarus	16 August 2021	1 July 2022	2 July – 14 August
Graubünden*	16 August 2021	8 July 2022	9 July – 14 August
Jura	16 August 2021	1 July 2022	2 July – 14 August
Lucerne*	23 August 2021	8 July 2022	9 July – 21 August
Neuchâtel	16 August 2021	1 July 2022	2 July – 14 August
Nidwalden*	16 August 2021	8 July 2022	9 July – 21 August
Obwalden*	23 August 2021	8 July 2022	9 July – 21 August
St. Gallen	16 August 2021	8 July 2022	9 July – 14 August
Schaffhausen	16 August 2021	8 July 2022	9 July – 14 August
Solothurn	16 August 2021	8 July 2022	9 July – 15 August
Schwyz*	16 August 2021	8 July 2022	9 July – 14 August
Thurgau	16 August 2021	8 July 2022	9 July – 14 August
Ticino	30 August 2021	15 June 2022	16 June – 28 August
Uri*	16 August 2021	1 July 2022	2 July – 15 August
Vaud	23 August 2021	1 July 2022	2 July – 21 August
Valais*	19 August 2021	24 June 2022	25 June – 17 August
Zug	16 August 2021	8 July 2022	9 July – 21 August
Zurich*	23 August 2021	15 July 2022	16 July – 21 August

* with variation between regions/municipalities

⁽⁵⁾ A total of four additional holiday weeks per year determined by the district school council.

Switzerland (continued)

TABLE II: Specification of shorter holiday periods

Canton	Autumn 2021	Christmas / New Year 2021/22	Winter 2022	Spring / Easter 2022
Aargau ⁽⁶⁾	2-17 Oct.	24 Dec. – 9 Jan.	variable	9-24 April
Appenzell Innerrhoden*	9-24 Oct.	18 Dec. – 2 Jan.	25 Feb. – 6 March	9-24 April
Appenzell Ausserrhoden*	9-24 Oct.	24 Dec. – 2 Jan.	variable	9-24 April
Bern*	25 Sept. – 17 Oct.	24 Dec. – 9 Jan.	variable	9-24 April
Basel-Landschaft*	2-17 Oct.	18 Dec. – 2 Jan.	26 Feb. – 13 March	9-24 April
Basel-Stadt	2-17 Oct.	18 Dec. – 2 Jan.	26 Feb. – 13 March	9-24 April
Fribourg*	16 Oct. – 1 Nov.	24 Dec. – 9 Jan.	26 Feb. – 6 March	15 April – 1 May
Geneva	23-31 Oct.	24 Dec. – 9 Jan.	12-20 Feb.	14-24 April
Glarus	9-24 Oct.	24 Dec. – 9 Jan.	29 Jan. – 6 Feb.	7-24 April
Graubünden*	9-24 Oct.	23 Dec. – 5 Jan.	26 Feb. – 6 March	30 April – 22 May
Jura	9-24 Oct.	24 Dec. – 9 Jan.	19-27 Feb.	9-24 April
Lucerne*	2-17 Oct.	18 Dec. – 2 Jan.	19 Feb. – 6 March	15 April – 1 May
Neuchâtel	2-17 Oct.	24 Dec. – 9 Jan.	26 Feb. – 6 March	9-24 April
Nidwalden*	25 Sept. – 10 Oct.	18 Dec. – 2 Jan.	19 Feb. – 6 March	15 April – 1 May
Obwalden*	2-17 Oct.	24 Dec. – 6 Jan.	19 Feb. – 6 March	15 April – 1 May
St. Gallen	2-24 Oct.	18 Dec. – 2 Jan.	variable	9-24 April
Schaffhausen	2-24 Oct.	24 Dec. – 2 Jan.	29 Jan. – 13 Feb.	15 April – 1 May
Solothurn*	2-24 Oct.	25 Dec. – 9 Jan.	5-20 Feb.	9-24 April
Schwyz*	2-17 Oct.	24 Dec. – 6 Jan.	26 Feb. – 6 March	30 April – 15 May
Thurgau	9-24 Oct.	18 Dec. – 2 Jan.	29 Jan. – 6 Feb.	2-18 April
Ticino	30 Oct. – 7 Nov.	24 Dec. – 9 Jan.	26 Feb. – 6 March	15-24 April
Uri*	2-17 Oct.	24 Dec. – 9 Jan.	19 Feb. – 6 March	30 April – 15 May
Vaud	16-31 Oct.	24 Dec. – 9 Jan.	19-27 Feb.	15 April – 1 May
Valais*	13-24 Oct.	24 Dec. – 9 Jan.	26 Feb. – 6 March	15-24 April
Zug	2-17 Oct.	23 Dec. – 5 Jan.	5-20 Feb.	15 April – 1 May
Zurich*	9-24 Oct.	18 Dec. – 2 Jan.	variable	15 April – 1 May

* with variation between regions/municipalities

⁽⁶⁾ A total of four additional holiday weeks per year determined by the district school council.

Turkey

Organisation of school time in primary and general secondary education – 2021/22

	Primary education	General secondary education
Starting date of students' school year	13 September 2021 (either face to face or online)	13 September 2021 (either face to face or online)
Mid-semester break	15-19 November 2021	15-19 November 2021
End of students' school year	17 June 2022	17 June 2022
Christmas/New Year	1 January 2022	1 January 2022
Winter/Carnival	2 weeks 24 January – 4 February 2022	2 weeks 24 January – 4 February 2022
Mid-semester break	11-15 April 2022	11-15 April 2022
Summer	12 weeks 17 June – 5 September 2022	12 weeks 17 June – 5 September 2022
Public/religious holidays	29 October 2021 (1 day – Republic Day) 3-5 May 2022 (3 days – Ramadan holiday) 19 May 2022 (1 day – Youth and Sport Day)	29 October 2021 (1 day – Republic Day) 3-5 May 2022 (3 days – Ramadan holiday) 19 May 2022 (1 day – Youth and Sport Day)
Starting date of teachers' school year	Beginning September	Beginning September
End of teachers' school year	Beginning July	Beginning July

Source: Eurydice.

Additional notes

In primary and general secondary education, a school year must contain at least 180 days. A school year runs 9 months from September to June. The total number of public/religious holidays is 5 days in 2021-2022 educational year. A school year is divided into two parts: at the end of a semester, there is a two-week holiday, called mid-school year holiday. In addition, by 2020-2021, there will be two mid-semester breaks in November and April, both of which are five-day in-semester breaks. The summer holidays are between June and September. Decisions on ending/starting semester dates are made by the Ministry.

Source: The work schedule of Ministry of National Education. (shorturl.at/ntNT5)

**EUROPEAN EDUCATION AND CULTURE
EXECUTIVE AGENCY**

Education and Youth Policy Analysis

Avenue du Bourget 1 (J-70 – Unit A6)
B-1049 Brussels
(<http://ec.europa.eu/eurydice>)

Authors

Gisèle De Lel

Graphics and layout

Patrice Brel

Production coordinator

Gisèle De Lel

EURYDICE NATIONAL UNITS

ALBANIA

Eurydice Unit
European Integration and Projects Department
Ministry of Education and Sport
Rruga e Durrësit, Nr. 23
1001 Tiranë

AUSTRIA

Eurydice-Informationsstelle
Bundesministerium für Bildung, Wissenschaft und
Forschung
Abt. Bildungsentwicklung und –monitoring
Minoritenplatz 5
1010 Wien

BELGIUM

Unité Eurydice de la Communauté française
Ministère de la Fédération Wallonie-Bruxelles
Direction des relations internationales
Boulevard Léopold II, 44 – Bureau 6A/001
1080 Bruxelles

Eurydice Vlaanderen
Departement Onderwijs en Vorming/
Afdeling Strategische Beleidsondersteuning
Hendrik Consciencegebouw 7C10
Koning Albert II-laan 15
1210 Brussel

Eurydice-Informationsstelle der Deutschsprachigen
Gemeinschaft
Ministerium der Deutschsprachigen Gemeinschaft
Fachbereich Ausbildung und Unterrichtsorganisation
Gospertstraße 1
4700 Eupen

BOSNIA AND HERZEGOVINA

Ministry of Civil Affairs
Education Sector
Trg BiH 3
71000 Sarajevo

BULGARIA

Eurydice Unit
Human Resource Development Centre
Education Research and Planning Unit
15, Graf Ignatiev Str.
1000 Sofia

CROATIA

Agency for Mobility and EU Programmes
Frankopanska 26
10000 Zagreb

CYPRUS

Eurydice Unit
Ministry of Education, Culture, Sport and Youth
Kimonos and Thoukydidou
1434 Nicosia

CZECHIA

Eurydice Unit
Czech National Agency for International Education and
Research
Dům zahraniční spolupráce
Na Poříčí 1035/4
110 00 Praha 1

DENMARK

Eurydice Unit
Ministry of Higher Education and Science
Danish Agency for Higher Education and Science
Haraldsgade 53
2100 Copenhagen Ø

ESTONIA

Eurydice Unit
Analysis Department
Ministry of Education and Research
Munga 18
50088 Tartu

FINLAND

Eurydice Unit
Finnish National Agency for Education
P.O. Box 380
00531 Helsinki

FRANCE

Unité française d'Eurydice
Ministère de l'Éducation nationale, de la Jeunesse et des
Sports (MENJS)
Ministère de l'Enseignement supérieur, de la Recherche et
de l'Innovation (MESRI)
Direction de l'évaluation, de la prospective et de la
performance (DEPP)
Mission aux relations européennes et internationales
(MIREI)
61-65, rue Dutot
75732 Paris Cedex 15

GERMANY

Eurydice-Informationsstelle des Bundes
Deutsches Zentrum für Luft- und Raumfahrt e. V. (DLR)
Heinrich-Konen Str. 1
53227 Bonn

Eurydice-Informationsstelle der Länder im Sekretariat der
Kultusministerkonferenz
Taubenstraße 10
10117 Berlin

GREECE

Hellenic Eurydice Unit
Directorate for European and International Affairs
Directorate-General for International and European Affairs,
Hellenic Diaspora and Intercultural Education
Ministry of Education and Religious Affairs
37 Andrea Papandreou Street (Office 2172)
15180 Amarousion (Attiki)

HUNGARY

Hungarian Eurydice Unit
Educational Authority
19-21 Maros Str.
1122 Budapest

ICELAND

Eurydice Unit
The Directorate of Education
Víkurbíó 3
203 Kópavogur

IRELAND

Eurydice Unit
Department of Education and Skills
International Section
Marlborough Street
Dublin 1 – DO1 RC96

Acknowledgements

ITALY

Unità italiana di Eurydice
Istituto Nazionale di Documentazione, Innovazione e Ricerca
Educativa (INDIRE)
Agenzia Erasmus+
Via C. Lombroso 6/15
50134 Firenze

LATVIA

Eurydice Unit
State Education Development Agency
Valņu street 1 (5th floor)
1050 Riga

LIECHTENSTEIN

Informationsstelle Eurydice
Schulamts des Fürstentums Liechtenstein
Austrasse 79
Postfach 684
9490 Vaduz

LITHUANIA

Eurydice Unit
National Agency for School Evaluation of the Republic of
Lithuania
K. Kalinausko Street 7
03107 Vilnius

LUXEMBOURG

Unité nationale d'Eurydice
ANEFORÉ ASBL
eduPôle Walferdange
Bâtiment 03 - étage 01
Route de Diekirch
7220 Walferdange

MALTA

Eurydice National Unit
Directorate for Research, Lifelong Learning and
Employability
Ministry for Education
Great Siege Road
Floriana VLT 2000

MONTENEGRO

Eurydice Unit
Vaka Djurovica bb
81000 Podgorica

NETHERLANDS

Eurydice Nederland
Ministerie van Onderwijs, Cultuur en Wetenschap
Directie Internationaal Beleid
Rijnstraat 50
2500 BJ Den Haag

NORTH MACEDONIA

National Agency for European Educational Programmes and
Mobility
Boulevard Kuzman Josifovski Pitu, No. 17
1000 Skopje

NORWAY

Eurydice Unit
The Directorate for Higher Education and Skills
Postboks 1093,
5809 Bergen

POLAND

Polish Eurydice Unit
Foundation for the Development of the Education System
Aleje Jerozolimskie 142A
02-305 Warszawa

PORTUGAL

Unidade Portuguesa da Rede Eurydice (UPRE)
Direcção-Geral de Estatísticas da Educação e Ciência
(DGEEC)
Av. 24 de Julho, n.º 134
1399-054 Lisboa

ROMANIA

Eurydice Unit
National Agency for Community Programmes in the Field of
Education and Vocational Training
Universitatea Politehnică Bucureşti
Biblioteca Centrală
Splaiul Independenţei, nr. 313
Sector 6
060042 Bucureşti

SERBIA

Eurydice Unit Serbia
Foundation Tempus
Ruze Jovanovic 27a
11000 Belgrade

SLOVAKIA

Eurydice Unit
Slovak Academic Association for International Cooperation
Křížkova 9
811 04 Bratislava

SLOVENIA

Eurydice Unit
Ministry of Education, Science and Sport
Education Development and Quality Office
Masarykova 16
1000 Ljubljana

SPAIN

Instituto Nacional de Evaluación Educativa (INEE)
Ministerio de Educación y Formación Profesional
Paseo del Prado 28
28014 Madrid

SWEDEN

Eurydice Unit
Universitets- och högskolerådet/
The Swedish Council for Higher Education
Box 4030
171 04 Solna

SWITZERLAND

Eurydice Unit
Swiss Conference of Cantonal Ministers of Education (EDK)
Speichergasse 6
3001 Bern

TURKEY

Eurydice Unit
MEB, Strateji Geliştirme Başkanlığı (SGB)
Eurydice Türkiye Birimi, Merkez Bina 4. Kat
B-Blok Bakanlıklar
06648 Ankara

Getting in touch with the EU

IN PERSON

All over Europe there are hundreds of local EU information centres.

You can find the address of the centre nearest to you at: https://europa.eu/european-union/contact_en

ON THE PHONE OR BY EMAIL

Europe Direct is a service that answers your questions about the European Union. You can contact this service:

- by freephone: 00 800 6 7 8 9 10 11 (certain operators may charge for these calls),
- at the following standard number: +32 22999696, or
- by electronic mail via: https://europa.eu/european-union/contact_en

Finding information about the EU

ONLINE

Information in all the official languages of the European Union is available on the Europa website: europa.eu

EU PUBLICATIONS

You can download or order free and priced EU publications from EU Bookshop at: <https://op.europa.eu/en/web/general-publications/publications>.

Multiple copies of free publications may be obtained by contacting Europe Direct or your local information centre (see https://europa.eu/european-union/contact_en).

EU LAW AND RELATED DOCUMENTS

For access to legal information from the EU, including all EU law since 1951 in all the official language versions, go to EUR-Lex at: <https://eur-lex.europa.eu/>

OPEN DATA FROM THE EU

The EU Open Data Portal (<https://data.europa.eu/en>) provides access to datasets from the EU. Data can be downloaded and reused for free, for both commercial and non-commercial purposes.

The Organisation of School Time in Europe. Primary and general secondary Education – 2021/22

The school calendar contains national data on the length of the school year, the start and the end dates of each school year, the timing and length of school holidays and the number of school days. Key points are illustrated by comparative figures. The information is available for 37 countries covering both primary and general secondary education.

The Eurydice Network's task is to understand and explain how Europe's different education systems are organised and how they work. The network provides descriptions of national education systems, comparative studies devoted to specific topics, indicators and statistics. All Eurydice publications are available free of charge on the Eurydice website or in print upon request. Through its work, Eurydice aims to promote understanding, cooperation, trust and mobility at European and international levels. The network consists of national units located in European countries and is co-ordinated by the European Education and Culture Executive Agency (EACEA).

For more information about Eurydice, see:
<https://eacea.ec.europa.eu/national-policies/eurydice/>.